



*Tewin*

# *Magazine*

June 2013

Price 60p



## **Can summer be far behind?**

## Editorial Note

The word parochial is sometimes used disparagingly but what could be more interesting than our own neighbourhood? We can still be concerned about global issues and turn our attention, usually thankfully, to village affairs.

That's why I am happy to take my turn in the editor's chair, following a long line of hard-working volunteers. My thanks to them all and to all the contributors who not only keep the organisations of Tewin afloat but also find time to write about them.

Please feel free to send me any news items . The email address is [tewinmagazine@gmail.com](mailto:tewinmagazine@gmail.com) and the deadline will be the 15th of each month but the earlier the better.

Jane Vine

Editor

Our cover picture shows children from Tewin Cowper School dancing at the Maypole.

## Bridge at Tewin Pavilion

The next **Chicago Bridge Drive** at Tewin Pavilion will be on **Tuesday 4<sup>th</sup> June** starting at 2:15pm and finishing at 5:00pm. Refreshments will be provided.

A charge of £3.00 per person will be made to defray expenses and to provide for a few small prizes.

If you intend to come along, either on your own or with a partner, please tell

Steve or Kate Stott

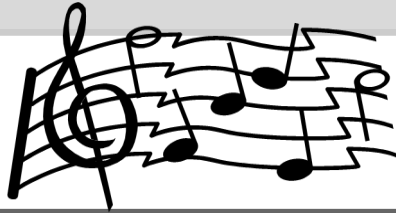
Tel: 01438717680

e-mail: [stephen.stott@which.net](mailto:stephen.stott@which.net)

## A couple of musical notes

Music is an important part of our worship at St Peter's and we have been lucky enough to have many talented and dedicated organists over the years.

Our present organist, Rosemary, is leaving us at the end of this month, and we are starting to look for a successor to take her place. If you are an organist and would like to consider becoming the organist at St. Peter's or would be available to play for occasional services, Ted Sharp (01438798594) would be pleased to hear from you.



We are very lucky to have a very gifted, warm-hearted and enthusiastic singing teacher living in Tewin. For those of us who went along to her first two group singing classes she offered in the village, we came away having thoroughly enjoyed ourselves, been surprised that maybe we could sing after all, and that, in any case, every person from many different levels of experience and ability, had been equally welcomed and encouraged. She led us through a mixture of breathing and singing exercises, with skill and perception to help us along. Of course we sang together too and played with different emotional moods, all with great fun and enthusiasm.

Maria Timofeeva is Russian and was a professional singer herself before becoming a mum. She teaches individuals (from home) as well as groups, at all levels (beginners included), and from classical to jazz to pop. If you would like to find out more about her she has a website [www.singingwithmaria.com](http://www.singingwithmaria.com). She is running a group class every Saturday in June, 3-5pm, at Burnham Green Village Hall for either regular or occasional attendance. These are continuing in July at the same time, on some Saturdays and some Sundays. You can contact Maria on 07454 398430 or by email [singingwithmaria@gmail.com](mailto:singingwithmaria@gmail.com) if you would like to come along.

**Clare Rawlins**

*A genuinely exhilarating experience. Moulin Rouge is like the best party ever, to the power of 10—Film Four*



Screen on the Green  
**MOULIN ROUGE**  
( 15, 2HRS 6MINS)  
Monday 17th June,  
Doors 7pm for a 7.45 start  
Tickets from the shop or at the door

June's presentation is a musical tour de force from director Baz Lurhmann. Ewan McGregor stars as Christian, who leaves behind his bourgeois father during the French belle époque of the late 1890s to seek his fortunes in the bohemian underworld of Montmartre, Paris. What follows is a baroque whirl of love, addiction and a scandalous new dance known as the Can-Can, told in a stylistically adventurous melding of 19th Century France with modern pop songs.

We look forward to seeing you !

## **TEWIN TENNIS CLUB.**

Small friendly outfit, happy to welcome new members-children and adults, any level.

We have club leagues and tournaments, and run teams for local leagues.

Tuesday evening is Club Night -Everyone Welcome.

Saturday morning is Turn-up-and-Play - Ladies 10am, Gents 11am.

VERY reasonable Annual Fee.

**Coach available -Steve Hunt (07912-075651)**

**Membership Secretary - Val Winfield (01992-582451)**



# River Mimram

## Progresses on two fronts

If you have driven along Codicote Road recently you will suddenly have seen the River Mimram beside you. Scrub has been cleared and two willows pollarded to let more light in to improve the river and its wildlife. And the 'ponds' have been opened up at Archers Green.

Both these projects are part of the Catchment Management Plan the Friends of the Mimram are helping to implement in conjunction with the Herts and Middlesex Wildlife Trust and the Environment Agency.

Come and see us at our Welwyn Fun Day stall near Singlers Bridge (June 29<sup>th</sup>) and we will explain what is happening in that part of the river as well. You can see the whole plan at [www.beanemimrampartnership.co.uk](http://www.beanemimrampartnership.co.uk)

We are also progressing in our campaign to reduce the amount of water taken out of the Mimram. The EA agree and we are waiting to hear if their compensation fund will be big enough. Affinity Water have now said in the consultation workshops that they too want to reduce the abstractions, although this will mean buying water from alternative sources which may cost us 25-35p a week extra. Their plan will be published for consultation in May and you can read the detail at [www.affinitywater.co.uk](http://www.affinitywater.co.uk).

However, Affinity's plan will have to be approved by Ofwat, who need to know this plan is what their customers want. So to provide the evidence that you agree, please join our petition which you can find on our website [www.friendsofthemimram.co.uk](http://www.friendsofthemimram.co.uk) or at our stall at the Welwyn Fun Day. We look forward to talking to you.

## **VILLAGE FETE - 29<sup>th</sup> JUNE: 2 – 5pm on Lower Green**

We look forward to seeing you at this year's Fete where attractions include a



Children's Funfair, face painting, games of skill, craft stalls etc., plus an opportunity for children to play tennis with Steve Hunt from Tewin Tennis Club. There will also be a New/Nearly New stall, Tombola for Adults and Children, a Barbecue, Bar Tent, and Pimms Bar, as well as our traditional Auction, for which there are a number of splendid Lots on offer this year. We also have some great Raffle prizes. Raffle tickets can be bought at the Fete, but if you're unable to be there, they are available now at Tewin Stores.

**As well as your support at the Fete, we will also need assistance setting up on Lower Green in the morning and clearing away afterwards, as well as with the manning of stalls.** It would be greatly appreciated if you were able to help in any way and would let us know in advance so we can allocate jobs. Please phone Lynn Farr on 798307, or Todd Canton on 717395. In addition, we would be grateful for contributions to the following stalls:

**NEW/NEARLY NEW STALL : *Unwanted presents, impulse purchases - anything from toiletries to kitchen utensils, to gardening paraphernalia etc.* (but not jumble).**

All items gratefully received by Alison Burleigh, who is happy to collect at a mutually convenient time. **Please contact her on 01438 715260.**

Alternatively, donations can be left at 23 Harwood Close – **NO LATER THAN MONDAY, 24th JUNE, PLEASE.**



**TOMBOLA** : *Wine – Spirits – Gifts – Chocolates - any other items (again, not jumble).*

*Also we would like Toys and Gifts for the Children's Tombola.*

Please contact Mary Gregg on 01438 717544 or deliver to 20A Hertford Road any time prior to the Fete, **BUT NO LATER THAN THURSDAY EVENING, 27<sup>rd</sup> JUNE, PLEASE.**

**SOFT TOYS** : *Soft Toys – either new or in good condition please.*

Please contact Adrienne Thorpe on 01438 798569 - **NO LATER THAN THURSDAY EVENING, 27<sup>rd</sup> JUNE, PLEASE.**

**CAKES etc.** : *Home-Made Cakes - large or small - Preserves etc.*

Please contact Jean Canton on 01438 717395, or deliver to her at 21 Lower Green on **FRIDAY 28<sup>th</sup>, OR SATURDAY 29th JUNE (before 12 noon please).** You can also deliver direct to the Memorial Hall **ON THE SATURDAY MORNING.**

In the meantime, if you'd like to know more, there is a direct website link on <http://www.tewinvillage.co.uk/village-hall/the-fete/>

## The Age of Elegance

Don't forget the Classic Car Show coming up on August 18th. There will be more details in the next issue of this magazine. Here's a reminder from last year's very successful show to whet your appetite.



# The Old Post Office Tea Rooms

Traditional Tea Rooms serving home baked goods, breakfast and light lunches with a small delicatessen specialising in local produce.

Open Tuesday - Sunday

3 Datchworth Green, Datchworth

01438 816 034

[www.oldpostofficetearooms.co.uk](http://www.oldpostofficetearooms.co.uk)



Tewin resident Sue Enmarch has put her own stamp on The Old Post Office Tea Rooms, in Datchworth. Visitors and locals have been making the most of the tea rooms and deli since it opened just over a year ago.

Sue, an IT specialist in the city for 20 years, now employs three part-time staff, all local, and between them they offer customers breakfasts, light lunches, teas and occasional special dinners. Food is sourced as locally as possible and includes meat from Digswell Butchers and cheeses from Wobbly Bottom Farm, near Hitchin.

The building dates back to the 17<sup>th</sup> century and displays part of the original cruck frame. Old furniture and vintage china add to the charm. Also on display and for sale are crafts from local artisans. There is a courtyard garden for sunny days and the rooms can be hired for private dinners. Sue also provides outside catering and has launched monthly themed dinners with food from around the world.

“We are able to offer our customers good food in a great setting. I wanted to open my own tea rooms for a while and when this building became available it seemed like the ideal opportunity,” said Sue. “I hope our second year will be even more successful as more people get to hear about us and come to see for themselves.”



## Tewin Stores

### Adding some Summer colour

Our expert committee member Maureen has been very busy sourcing plants for our gardens. Fill those spaces where plants have died over winter. We have colourful annuals and perennials, and it is hoped that Bulls Green Nursery roses will be available soon. Any of you who have had these before will know how good they are.

Now that the better weather is here, why not meet your friends for a coffee or tea in our courtyard garden? Our home baked pastries and Mellyn Bakes's gluten free cakes are all very tasty.

We are very grateful to THACS who have again made sure that their plantings in the courtyard are growing well.

**Opening hours:-Monday to Friday 8.30am to 4.30pm**  
**Saturday 8.30am to 12.30pm**



## Friends of Tewin

We had a beautiful sunny day for the dancing around the maypole for all the children from Tewin Cowper School and the event was enjoyed by all.

Those people going on the Brighton Trip on July 16th, your balance of money is due now please. We leave Tewin at 8.30 am from the Rose & Crown.

Please put the date of Sunday August 18th in your diary for the annual Classic Car & Craft Show on the Upper Green from noon till 5pm.

**Linda Crawford**  
**Chairman**  
**Friends of Tewin**

## **Tewin Parish Council**

### **Election of Chairman and Vice Chairman for Tewin Parish Council**

At the Annual Parish Council meeting on May 13<sup>th</sup> 2013 Cllr Keith St Pier and Cllr Adrian Hill were elected as Chairman and Vice Chairman respectively with the unanimous support of the Councillors. Both Councillors signed a Declaration of Acceptance of Office.

The Parish Council thanked Cllr Kristina Lawson for 11 years of excellent Chairmanship of the Parish Council during which time many interesting and worthwhile projects for the benefit of the parish have been achieved.

### **Tewin Parish Council Chairman's Report**

This will be distributed to every household in the parish within the next month and is also available to read on the Tewin village website ([www.tewinvillage.co.uk](http://www.tewinvillage.co.uk)).

### **Tewin Parish Council Accounts for the Financial Year Ending 31<sup>st</sup> March 2013**

At the Annual Parish Council meeting on 13<sup>th</sup> May 2013 the Parish Council unanimously resolved to accept the accounts for the financial year ending 31<sup>st</sup> March 2013 and they were signed by the Chairman and the Clerk as the Responsible Financial Officer.

### **Tewin Parish Council Annual Return for the year ended 31<sup>st</sup> March 2013**

The Parish Council unanimously resolved to accept and approve Section 1 Accounting Statement and Section 2 Annual Governance Statement on the Annual Return for the year ended 31<sup>st</sup> March 2013. The Annual Return was signed by the Chairman and the Clerk as the Responsible Financial Officer.

### **Fir Trees Bordering Upper Green Tennis Courts**

The Parish Council is aware that some of the fir trees alongside the tennis courts appear to be dying, and are talking to Taylor Wimpey about them.

### **Remedial Works**

The Parish Council has accepted a quote to replace missing tiles on the bus shelter and the well cover.

# Tewin Mobile Vets

Chris Wearne BVSc(Hons I) MRCVS



**01438 840 028**



*Your local, professional heating engineer and bathroom installer.*

Able to carry out full installations including boilers, bathrooms, radiators, tanks, cylinders, cold mains pressurised cylinders, etc.

Services and system flushes to reduce sludge and debris, and much more..

Qualified and insured. **Gas Safe**, energy efficiency self-certification, Worcester accredited installer.



## **Team Vicar's Letter**

### **From Grotto to Ghetto**

In Bethlehem the 8 metre high wall which surrounds the city looms large, ugly and aggressive. For the people whose houses and businesses it overshadows it is a daily reminder of freedom curtailed. Since the beginning of its construction families who live in Bethlehem have found they are separated from their olive groves and their relatives who remain outside. Permits needed to visit these are often late or denied. A trip which used to take 10 minutes can now take several hours instead. Sometimes access is just completely prohibited.

This was according to the experience of ordinary Palestinian Christians who we talked with in Bethlehem, Jerusalem and Nazareth. In May, myself, Pauline Brown, Rose Lind and others from the Welwyn Team visited the Holy Land and various social and peace building projects supported by the charity Embrace the Middle East. They showed us their work with the disadvantaged and their struggle to promote peace in a land of inequality and division. Each in their own way had something to say about the wall and the settlements being built on disputed land. It evoked much frustration, sadness and despair.

The situation is vastly complicated. I am aware we spoke only with a section of the population, but it is clear the wall works against reconciliation. It may or may not help with security as the Israeli government claim its purpose to be – but it will not bring peace. In the bible peace is not the absence of conflict but rather the active presence of goodwill between people and people, and people and God. What we witnessed on a daily basis during our time there, was not peace-building but rather loss of human dignity and widening divisions.

The trip was heartbreaking because some Palestinians saw only despair. But also we witnessed extraordinary people who insisted, despite all there is to contend with, to work for peace; encouraging ordinary acts of prayer, conversation and care between people on all sides of the conflict. As Israeli and Palestinian authorities fail to find a solution perhaps the hope for the land will rest on peacemakers such as these who work at a grassroots level to break the barriers of fear and suspicion between the two sides. I have hung in my kitchen a sign embroidered by a Palestinian woman. It reads: make tea, not walls.

Susannah

## ST PETER'S CHURCH SERVICES

DATE	DAY	SERVICE	TIME	MINISTER	1 <sup>ST</sup> READING	2 <sup>ND</sup> READING	GOSPEL
JUNE 2 <sup>ND</sup>	TRINITY 1	HOLY COMMUNION	9.30 am	SUSANNAH UNDERWOOD	1 KINGS 8:22-33 41-43	GALATIANS 1:1-12	LUKE 7:1-10
		CHORAL EVENSONG	6.30 pm	COLIN HULL	GENESIS 4:1-16	MARK 3:7-19	
9 <sup>TH</sup>	TRINITY 2	HOLY COMMUNION	9.30 am	SUSANNAH & LUCY	1 KINGS 17:17-end	GALATIANS 1:11-end	LUKE 7:11-17
16 <sup>TH</sup>	TRINITY 3	FAMILY SERVICE	11.15 am	SUSANNAH UNDERWOOD	LUKE 7:11-17		
		HOLY COMMUNION	6.30 pm	SUSANNAH UNDERWOOD	2 SAMUEL 11:26-12:10, 13-15	GALATIANS 2:15 end	LUKE 7:36-8:3
23 <sup>RD</sup>	TRINITY 4	HOLY COMMUNION	9.30 am	SUSANNAH & USHA	ISAIAH 65:1-9	GALATIANS 3:23-end	LUKE 8:26-39
30 <sup>TH</sup>	ST PETER -TIDE	HOLY COMMUNION	9.30 am	RICHARD SYMS	ACTS 12:1-11	1 PETER 2:19-end	MATTHEW 16:13-19

# WELCOME

Come and join us !

You are assured of a warm welcome at St Peter's at any of our services whether you are a regular churchgoer or not



## ROTAS

SERVER	READER	SIDESMEN	COFFEE	FLOWER	CLEAN
2/6 Pauline	Keith Barnfield	Graham Spring Ruth Sharp	Anna Clark	Gloria Kersey	Pauline Spring
	Linda Adams	Mark Swann Graham Spring			
9/6 Trevor	Karen Shaw	Keith Barnfield Nick Whiting	Nicky Hadley	Queenie & Elaine	Dorothy Swann
16/6 David	Nicky Hadley	Mary Gregg Mavis Hagggar	Mavis Hagggar	Judy Puddefoot	Pete Johnson
	Malcolm Slaughter	Ivor & Linda Williams			
23/6 Pauline	Rosemary Nodder	Karen Shaw Keith Barnfield	Ugo & Steven	Clare Rawlins	Nicky Hadley
30/6 David	Mary Gregg	Linda Adams Di Bradley	Sheila Feakes	Wedding	Volunteer Wanted

Service of Said Evening Prayer is held every Monday at 5pm

## Dennis Carlton

Many of you may have heard of the death of Dennis Carlton, a very loved and respected person in the village, who later moved to Australia with his wife, Wynn. His wish to be buried in Tewin will be carried out on Thursday 27th June at St. Peter's Church where there is to be a Service of Celebration of his Life and the interment of his ashes. All are welcome at St. Peters Church at 2 pm and afterwards at The Plume of Feathers where Wynn with Aimee and the family will be pleased to see you all.

**Should you need any more information please do not hesitate to contact Linda Crawford : Telephone 717538**

## Churchwarden's Notes

Our Annual Parochial Church Meeting was held on April 21st where, as predicted, only one churchwarden was elected, Mike having retired after a long and very productive term in office. Other positions were filled at our first Parochial Church meeting after that, on May 13th. Trevor Land agreed to become the Child Protection Officer and Jane Vine took on the huge task of preparing the Tewin Magazine for print each month. Malcolm Slaughter is now Deputy Churchwarden for which I personally am very grateful.

Plans are underway to repair the damage to the grass on the right hand side at the top of the drive, caused by excessive wear and tear during a very wet winter. Plastic mesh is to be installed and seeded with grass which will then be protected by virtue of the structure of the mesh. This area has been a hazardous eyesore for some years and it will be good to see it improved.

Now some dates for your diaries:-

June 29th Tewin Fete. Any offers of help with the Tombola stall would be appreciated.

August 18th Classic Car and Craft Show. Volunteers needed to help with car parking etc.

November 24th Bishop Paul of Hertford is coming to visit St Peter's.

November 30th Christmas Market.

Hopefully by then we will have had the opportunity to enjoy some more seasonal weather than we are experiencing at present.

Pete

# **Aden Associates**

**Electrical Contractors**

**Contact: Victor Murray**

**7 Lower Green, Tewin**

**tel: 01438 716613**

**victor@adenassociates.co.uk**



# Tewin Pavilion

## On Upper Green

The ideal venue, with ample parking space,  
for children's parties, small meetings and hobby clubs

For Bookings and Enquiries please contact

Doreen Lloyd

01438 715020 or see [www.tewinvillage.co.uk](http://www.tewinvillage.co.uk)



The Summer Term brings with it many special events. Maypole Dancing on Lower Green was a highlight as always. This year we were blessed with lovely weather and a lovely display from our Year 3 and 4 children. Our rounders team has started the term with a run of victories; the practicing and determination to win has paid off. An array of medals are testament to the great turnout at this year's Fun Run .A special mention to Daniel Ireland who came first in the longer run.

The curriculum is always enhanced by our wonderful locality. As part of their topic on rivers, our two top classes , Honeybees and Dragonflies (years 4, 5 and 6), carried out a study of the River Mimram. Some of our children will be taking part in the launch of the NADFAS project at St Peter's Church. We are grateful to Mary Gregg and Ruth Kearns for organising this.

There is much excitement in our Ladybird Class (reception). They have had a first-hand opportunity to learn about life-cycles, firstly through observing caterpillars become butterflies, then the eggs they were incubating hatching into fluffy chicks. Now they are waiting for their tadpoles to become frogs as the grand finale to their topic and the completion of their class 'zoo'.

Last week was assessment week and our Year 6 children had their SATs tests. Just to add to the intensity of the week, we had an OFSTED inspection for two days..... and so I think we are all ready for the half-term break before we launch ourselves into the final weeks of the school year when we will be swimming in our school pool, holding our annual sports day, preparing for the transition to new schools/classes, holding our P.A. summer fete on 15<sup>th</sup> June (please come and support us) and of course celebrating the learning journeys of our Year 6 children as they prepare to move on.

The Staff Team

Vintage Tea/Coffee morning  
Tewin Pavillion  
Thursday, July 4  
10.00– 12.00  
Proceeds will be in aid of  
Marie Curie Cancer Care

## Tewin Memorial Hall

### Another successful chapter

Our Spring Book Sale proved to be another well attended event, with the takings of £461 being very close to a record for these sales, which proves that even with the present day popularity of Kindle, iPads etc., people still enjoy the experience of holding an actual book in their hands!

The Memorial Hall is very grateful to everyone who donated books and jigsaw puzzles, and to all those who came along to browse and buy the great variety of goods on offer. They also wish to thank the Friends of Tewin, who kindly organised the event, as well as all those people who helped set out tables, sort and arrange books, man the Hall during the day, and serve refreshments. The whole day proved to be very enjoyable and worthwhile, and we look forward to repeating this at the next sale in the Autumn, details of which will appear in a later issue of this magazine.



Tewin Memorial Hall Management Committee

### Launch of St Peter's Church Nadfas Children's Trail

On May 22 Honeybees class, led by Mrs Lynda Cowler, visited St Peter's Church to help launch our new Children's Nadfas trail. The National Association of Decorative and Fine Art Societies produces church trails for children and their families to help them discover and explore our wonderful heritage of parish churches.

A small group of volunteers from Tewin have been working on a trail for St Peter's. It is designed for children from eight to twelve years but includes plenty to interest people of all ages. It was good to see the children having fun searching for the keys of St Peter, looking at the stained glass, kneelers and memorials inside the church, some of the interesting graves in the churchyard and the ancient sundial carved into the stonework of the church.

Many thanks go to the children, their teacher and helpers and also to Linda Adams, Elisabeth Buchanan, Rosemary Nodder, Clare Rawlins and Pauline Spring for their help with this project. The trail questions and answers will be on permanent display in the church so come along and find out more about your beautiful parish church.

**Mary Gregg**



## Steve looks set for a gigantic success

Tewin artist, illustrator and writer Stephen Collins has been compared to Roald Dahl and praised by Raymond Briggs after publishing his first graphic novel.

*The Gigantic Beard that was Evil* was described in *The Observer* as, “ a fairy tale for adults that children will also adore ”. The review also said the book was “surely destined to become a classic.”

It's a surreal look at a repressive society, illustrated in Steve's distinctive style, which *Guardian* readers will recognise from his cartoons in the *Week-end* magazine on Saturdays.

Locally Steve is a supporter of *The Screen on the Green* and provides the posters for each film.



## **THACS - TEWIN HORTICULTURAL ARTS & CRAFTS SOCIETY**

### **Wanted: Green Fingers and helping hands**

Once again *THACS* will be organising the plant stall at the Village Fete on Saturday, June 29 so we need plants and other things to sell. You may have plants that others would value highly, so keep us in mind when you find off-shoots and seedlings that need to be cleared out. You may be surprised that others value these plants more than you do and are willing to pay good money for them!

Last year we had great fun and success despite the wind. This year we hope to do even better and with all your help I am sure we will. All the monies raised go to help maintain the village hall, a very worthy cause.

If you have any plants to donate, then please bring them to the plant stall on Lower Green during the morning of the fete. If this is inconvenient then you can drop them off before then to either Nick Whiting, 5 Churchfield Road, or Sue Whitbourn, 107 Burnham Green Road.

**Nick Whiting Tel: 01438 717230**

## **Wednesday 31<sup>st</sup> July 2013 - Visit to Wrest Park House and Gardens**

Wrest Park is an English Heritage site at Silsoe, near Luton, Bedfordshire. This is one of Britain's largest and most important 'secret gardens' and it is being revived by English Heritage after decades behind virtually closed doors when its treasures were overgrown and largely unknown. Boasting 90 acres of glorious gardens, it's great for lovers of history, heritage and horticulture to indulge their passion.

The new exhibitions in the house and garden buildings will help you to find out more about the garden and the people who shaped it. There are extensive reinstated historic pathways for you to enjoy as you discover the garden buildings, pavilion and statues.

There is a new café located in the walled garden that provides a variety of delicious soups and sandwiches and scrumptious cakes all made from locally-sourced produce. There are also numerous picnic areas. There is also a gift shop and a new plant area to explore

Disabled access is reasonably good. The Walled Garden and visitor centre are fully accessible on level surfaces. Access to the mansion is via a platform lift adjacent to the main visitor entrance. Access to the grounds is mainly via smooth paths. There are steps or a steep slope to the Orangery and steep steps to the Pavilion. Mobility scooters are available and must be booked in advance.

English Heritage members get free entry to the property but they must bring their membership cards with them on the day. The prices are:

<sup>1</sup>:- Concession prices are available to people who are aged 60 or over

<sup>2</sup>:- Prices available to children who are aged between 5 and 15.

	With English Heritage membership	Without English Heritage membership		
		Adult	Concession <sup>1</sup>	Children <sup>2</sup>
THACS members	£12.00	£19.50	£18.75	£16.00
Non-members	£13.00	£20.50	£19.75	£17.00

The visit includes an optional guided tour for £2, which should be particularly useful to you if this is your first visit to Wrest Park. The tours will last about an hour and a half. Group sizes are limited, so booking is essential.

If you want to find out more about Wrest Park before visiting, then please see their web site at <http://www.english-heritage.org.uk/daysout/properties/wrest-park/>.

The coach will leave Tewin (from the bus stop opposite the Rose & Crown) at 9:30am, and will leave Wrest Park Abbey for the return journey at 3:30pm. Please fill in the booking form and send it, with your cheque (payable to THACS) to:- **Ray Keppler, 15 Upper Green Road, Tewin, AL6 0LE by Monday 22<sup>nd</sup> July 2013.** You can get the booking form from the THACS page on the Tewin web site ([www.tewinvillage.co.uk](http://www.tewinvillage.co.uk)) or from Ray Keppler (01438 717545 or email to [raykeppler@btinternet.com](mailto:raykeppler@btinternet.com)).

## Parish Council Information

**The next meeting is the Annual Parish Council meeting on Monday 3<sup>rd</sup> June at 7.45pm at Tewin Memorial Hall.**

**Agenda:** Please notify the Clerk at least one week before the meeting if you wish to suggest items for discussion at the meeting. The agenda is published on the Notice Board outside Tewin Stores 3 working days before the meeting. *All Parishioners are welcome to attend and can make comments at the start of the meeting.*

**Minutes:** These are displayed at Tewin Stores, Tewin Memorial Hall, at the bus shelter at the top of Desborough Drive and on the website [www.tewinvillage.co.uk](http://www.tewinvillage.co.uk). The minutes are not published until approved and signed at the subsequent meeting.

**Newsletters/Meeting Dates:** These are published on the website [www.tewinvillage.co.uk](http://www.tewinvillage.co.uk)

**Queries:** Please contact:

Chairman, Keith St Pier      Tel: 01438-717551

Clerk, Caroline McFarlane      Tel: 01438-798969      E-mail - caroline.mcfarlane@virgin.net

**East Herts District Councillors - North Ward: Cllr Michael**

McMullen      Tel: 01920-463430

**East Herts District Councillors - South Ward: Cllr Linda Haysey**

Tel 01992-582151

**Herts County Councillor: Cllr Ken Crofton**      Tel: 01438 869650

**Police Community Team – 01707-354192** - For non-emergency purposes

**Highways Fault Line: - 0300 123 40 47-** For reporting potholes etc

**East Herts District Council: 01279-655261** or [www.eastherts.gov.uk](http://www.eastherts.gov.uk) -

For reporting smoke & noise nuisance, flytipping, flyposting, dead animals on the road, stray dogs, dog fouling, abandoned vehicles, Environmental Services, Environmental Health, Pest Control, Waste Services, Planning, Tree Preservation Orders, Parking Warden for parking offences.

## **Friends of Danesbury & Queen Victoria Memorial Hospital**

The benefits that we are able to provide to the patients and professional teams at Danesbury and QVM Hospital are funded, in the main, by money raised in our two shops. The success of these depends on the goods donated for sale and, vitally, our shop staff. The overwhelming majority of our helpers are volunteers who give the Friends their time, energy and enthusiasm. They are at the heart of all our work and we are greatly indebted to them all.

Our shop at Knebworth is currently in need of some additional help. If you have some spare time and would like to use it in a very good cause, and in the company of some wonderful people, we would be delighted to hear from you. Just visit the shop, give them a call on 01438 813080 or contact the Friends office at Danesbury.

This year we will be celebrating the 20<sup>th</sup> anniversary of the opening of Danesbury. Looking back it now seems inconceivable that the original home was marked for closure. Danesbury Neurological Centre is now regarded as a keystone of neurological care in Hertfordshire and it is well worth remembering that its very existence is thanks to the efforts of the supporters of the original Danesbury Appeal. The Friends are planning an event for later in the year and we intend to invite supporters both past and present.

At a time when there is so much focus on the challenges to the Health Service it will be a pleasure to mark such a success.

**Friends of Danesbury and Queen Victoria Memorial Hospital**  
**01438 840514**

**Danesbury Neurological Centre**

School Lane  
Welwyn  
Herts AL6 9SB

## Isabel Hospice

Isabel Hospice care4acuppa is launched in June and runs through to Christmas. Please support Isabel Hospice by holding a fundraising care4acuppa. With over 165 million cups of tea and 70 million cups of coffee drunk everyday in the UK why not put yours to work for us by holding a fundraising tea party or coffee morning where you could have a bake sale, hold a raffle, organise a bring & buy! Call Maria Alexander on 01707 382500 for details.

**19<sup>th</sup> - 22<sup>nd</sup> June**

### **Calendar Girls**

The Greenwood Players present 'Calendar Girls'. Raising funds for Isabel Hospice and other charities. 8pm Cuffley Hall, EN6 4JA. Tickets £12.00 (includes a £2.00 charity donation) Box office 0790 202 9115

**27<sup>th</sup> June**

### **Quiz Night**

Welwyn B49 Business Networking is hosting this event in support of Isabel Hospice. Venue: Welwyn Garden City Golf Club, Mannicotts, High Oak Road, Welwyn Garden City AL8 7BP. Tickets: £12 each, including a hot supper - teams of six.

**And finally..**

**some genuine items from parish magazines**

**The Fasting & Prayer Conference includes meals.**

**Ladies, don't forget the rummage sale. It's a chance to get rid of those things not worth keeping around the house. Bring your husbands**

**Don't let worry kill you off - let the Church help**



## Dates for your diary this month

Tue	Pavilion	7.30-9.30	Table Tennis
Wed	Rose & Crown	9.00pm	Quiz Night
Thur	Lower Green	9.25am	Footpath walks of Tewin
Thur	Memorial Hall	1.30-4.30pm	50+ Club
Saturday 29th	Lower Green	2-5pm	Tewin Fete

### Tewin Memorial Hall Supporters Club

Registered Charity No. 308158

#### Memorial Hall Draw April

1 <sup>st</sup>	£62	Ronald Beadle, Queen Hoo Lane
2 <sup>nd</sup>	£37	Eric Fishwick, Godfries Close
3 <sup>rd</sup>	£12	Dorothy Mole, Orchard Road
3 <sup>rd</sup>	£12	Claire Morrisroe, Upper Green

Views expressed in the '*Tewin Magazine*' are not always those held by the Parish Council or by the Parochial Church Council

Editor: Jane Vine    [tewinmagazine@gmail.com](mailto:tewinmagazine@gmail.com)  
 Hard Copy: Jane Vine, 29 Cannons Meadow, Tewin  
 Distribution    Sue Whitbourn 01438 798221

**Team Vicar:** Rev'd Susannah Underwood, The Rectory, Brookbridge Lane, Datchworth, SG3 6SU tel: 01438 817183

*e-mail:* team.vicar@welwyn.org.uk

**Team Rector:** Rev'd Dr David Munchin, 1 Ottway Walk, Welwyn, AL6 9AS tel: 01438 714150

**Parish Office:** Weekdays 10 - 12 noon tel: 01438 840964

**Clergy Surgery:** Saturdays at St Mary's 10.00—11.00 am

**Reader:** Mick Simmons tel: 01438 817510

*e-mail:* reader60@live.co.uk

**Churchwarden:** Mrs Pete Johnson, 11 Jonathan House, Little Hardings, WGC, AL7 2EL tel: 01707 332579

**Parochial Church Council:**

**Hon Secretary:** Mrs Mary Gregg, 20a Hertford Road, Tewin, Herts AL6 0JY, tel: 01438 717544

**Hon Treasurer:** Mr Graham Spring, 25 Digswell Park Road, WGC, AL8 7NW tel: 01707 375499

**Bell Tower Capt.:** David Hall, 01707 884274

### Useful Phone Numbers

Bridge Cottage Surgery, Welwyn .....	01438 715044
Castlegate Surgery, Hertford .....	08448 151224
Hanscombe House Surgery, Hertford .....	01992 582025
Wallace House Surgery, Hertford .....	01992 550541
Watton Place Clinic, Watton-at-Stone .....	01920 830033
Moors Walk Surgery, Panshanger, WGC .....	01707 335151
Tewin Stores & Post Office .....	01438 717929
Tewin Memorial Hall .....	01438 717581
Tewin Pavilion .....	01438 715020
Burnham Green News .....	01438 798112
Rose & Crown Public House .....	01438 717257