



**UNIVERSITY OF HERTFORDSHIRE  
STATISTICAL SERVICES AND CONSULTANCY UNIT**

**An Analysis of  
The Tewin Parish Plan 2007 Survey**

**Report Commissioned by  
Tewin Parish Plan Steering Group**

Lindsey Kevan and Neil Spencer

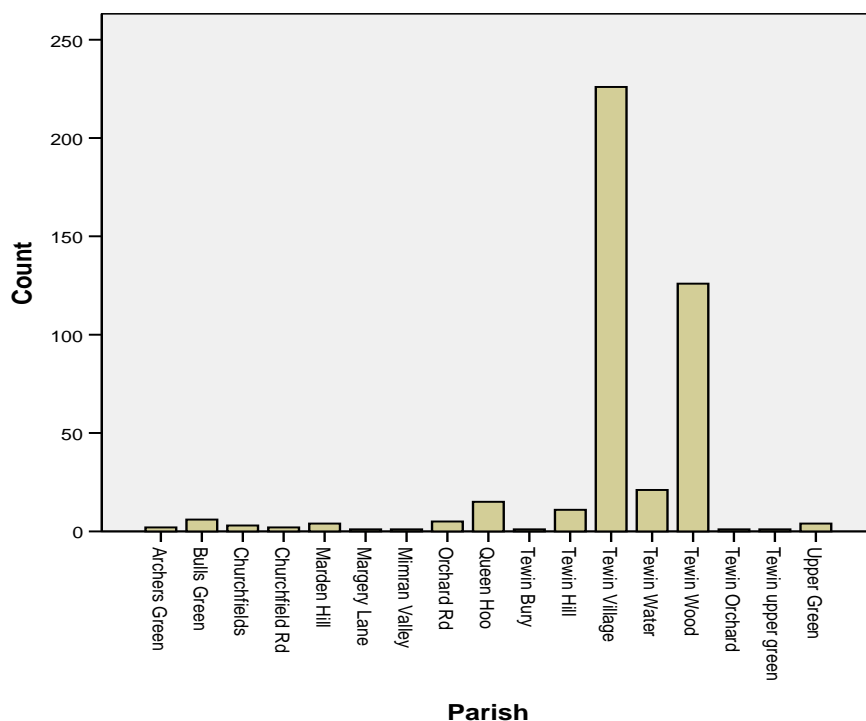
2nd July 2007

## Introduction

This report contains an analysis of responses obtained from the survey carried out for the Tewin Parish Plan in 2007. A full tabulation of responses can be found in the appendix. In the main body of the report, attention is drawn to certain questions that have elicited responses where respondents felt strongly about the issue of the question. It is anticipated that Tewin Parish Plan Steering Group may wish to develop action points associated with these questions. However, members of the Steering Group are advised to examine all tables in the appendix, as highlighting of particular questions has been done without the expert local knowledge they possess. The survey was divided into several sections, each containing a number of questions. Below, we deal with each section highlighting responses to certain questions, as described above.

## Household information

### Question 1



The graph above shows that the majority of respondents live in Tewin Village and Tewin Wood.

### Question 2

**Table of People living in household**

	Age 0-4	Age 5-11	Age 12-18	Age 19-24	Age 25-39	Age 40-59	Age 60-64	Age 65-74	Age 75 +
Male	36	34	38	30	43	185	50	61	47
Female	25	44	34	22	56	199	42	59	45

The table above shows that 35% of males and 38% of females fall into the 40-59 age category of people living in a household.

### Question 3

**Years lived in Tewin**

	N	Mean
Years lived in Tewin	412	21.58

The table above indicate that the average number of years a household has lived in Tewin is 21.58 years, approximately 22 years.

### Transport

### Question 5

**Number of Cars**

	Frequency
1 Car	137
2 Cars	224
3 Cars	48
4 Cars	8
None	18

The table above shows that 51% of the respondents each use 2 cars per household as opposed to only 4% of respondents who don't use a car.

### Question 7

**Transport Method**

	Frequency
Walking	66
Bicycle	15
Motorcycle	3
Own car	546
Car share	33
Scheduled bus	46
Train	49
Taxi	2
Not applicable	208

The table above represents the main transport method used for journeys to and from work, school or college, for each member of a household. It shows that only 7% of members walk but a surprising 56% of members use their car for their journey. The percentage of members who use the bus is even lower than the percentage of walking which is only 5%. Calculating the percentage per household is actually 22%.

**Table of how often the local bus is used**

	Frequency
Daily to/from school	23
Daily for other reasons	12
Weekly	35
Monthly	30
Once or twice a year	52

The majority of members only use the bus once or twice a year.

## Facilities/Activities

### Question 11

Activities members of a household participate in within Tewin

	Very frequently	Sometimes	Infrequently	Never	Unaware
Tewin Stores	183	109	72	40	2
Tebbutts Shops	152	89	86	65	4
Tewin Garage	36	59	141	136	4
St Peters Church	31	35	153	143	
Tewin memorial Hall	52	54	192	77	
Tewin JMI School	32	2	19	298	
Allotments	13		3	314	20
Scout Hut	28	1	2	293	19
Tewin pubs	86	150	124	35	
Mobile Library	7	20	28	274	29
Tewinbury Farm	9	37	228	95	1
Footpaths/Bridleways	236	100	39	23	
Police Van	1	2	21	268	68
Mobile Shops	17	24	49	231	50
Online groceries	27	39	37	258	7

The table above indicates how frequently a household uses each of the facilities stated in the table. The most frequently used facilities are footpaths/bridleways, Tewin stores and Tebbutts shops. The police van and mobile shops are two of the main facilities that a household classed as unaware that the facilities were available.

### Question 16

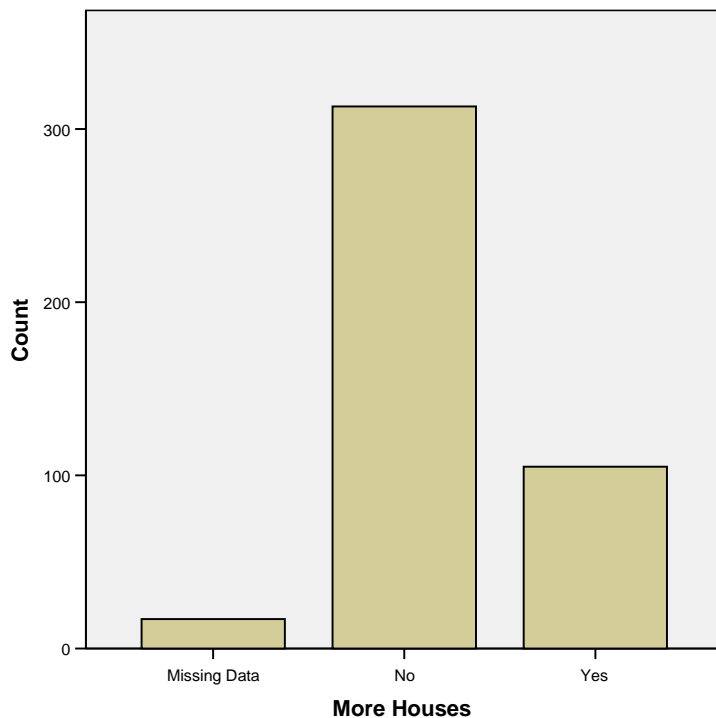
Activities

	Frequency
Bowls	26
Tennis Club	155
Badminton	26
Cricket Club	17
Brownies/Rainbows	25
Yoga/Pilates	39
Walking	693
Recreational cycling	323
Under 5's groups	38
Horse Riding	29
Other	73

The table above shows the activities members of a household participate in within Tewin. The activity they participate in the least is the cricket club, followed by Brownies/Rainbows.

## Housing

### Question 19



The graph above indicates that 72% of respondents are against Tewin's need for more houses. Of those respondents who are in favour of more housing, 37% chose the size of development to be 'up to 12 houses' and 33% chose '13-24 houses'.

## Roads and Environment

### Question 20

The table below indicates how satisfied the respondents are with the roads and the environment along with the level of important. For each point mentioned, the majority of the respondents are more satisfied than dissatisfied except for 'road maintenance' and 'road drainage' showing 65% and 82% of respondents being dissatisfied respectively. These were also regarded as the most important. Respondents consider 'trees and their maintenance' to be the least important of all.

		Level of importance				
		1	2	3	4	5
<b>Satisfied</b>		Count	Count	Count	Count	Count
<b>Seat and benches</b>	No	36	50	86	27	25
	Yes	34				
<b>Litter bins</b>	No	348	82	52	50	16
	Yes	75				19
<b>Lighting</b>	No	289	86	37	45	24
	Yes	140				38
<b>Pedestrian walkways</b>	No	242	105	56	42	11
	Yes	137				19
<b>Verges</b>	No	273	50	46	66	25
	Yes	87				15
<b>Footpaths</b>	No	323	108	56	31	12
	Yes	53				8
<b>Street cleaning</b>	No	71	66	54	48	19
	Yes	291				7
<b>Road maintenance</b>	No	144	144	57	23	9
	Yes	248				10
<b>Road drainage</b>	No	131	142	65	32	12
	Yes	68				10
<b>Road markings</b>	No	260	78	36	46	26
	Yes	90				11
<b>Dog waste bins</b>	No	170	76	33	46	18
	Yes	138				22
<b>Refuse collection</b>	No	356	134	33	16	7
	Yes	30				10
<b>Recycling facilities</b>	No	129	129	49	27	9
	Yes	171				12
<b>Trees and their maintenance</b>	No	310	73	64	47	14
	Yes	60				5
<b>Parking</b>	No	257	63	47	66	19
	Yes	104				10

## **Question 21**

**Table of concerns**

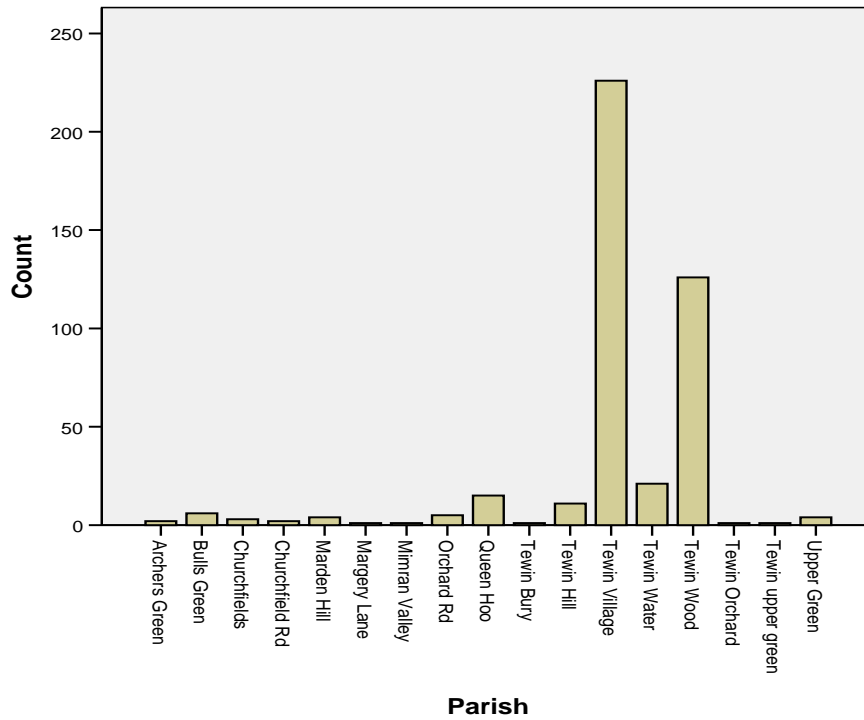
	None	Some	Very
Traffic speed now	63	179	147
Traffic speed Future	15	97	142
Amount of traffic now	125	162	76
Amount of traffic future	23	96	137
Heavy vehicles now	120	177	70
Heavy vehicles future	39	103	92
Noise pollution now	183	116	46
Noise pollution future	55	100	67
Light pollution now	226	81	30
Light pollution future	78	83	50
Commercial aircraft now	170	142	37
Commercial aircraft future	38	109	93
Light aircraft now	102	149	117
Light aircraft future	33	107	104
Crime and vandalism now	125	192	38
Crime and vandalism future	26	153	60
Pests now	161	106	99
Pests future	81	70	75

The table above consists of both the problems now and the problems for the future.

# Tables of Survey Responses

## Question 1

In which part of the parish does your household live?



	Frequency
Archers Green	2
Bulls Green	6
Churchfields	3
Churchfield Rd	2
Marden Hill	4
Margery Lane	1
Mimran Valley	1
Orchard Rd	5
Queen Hoo	15
Tewin Bury	1
Tewin Hill	11
Tewin Village	226
Tewin Water	21
Tewin Wood	126
Tewin Orchard	1
Tewin upper green	1
Upper Green	4
Total	430
Missing Data	5

## Question 2

Please indicate the number, gender and age of the people living in your household by entering numbers in the boxes below.

**Table of People living in household**

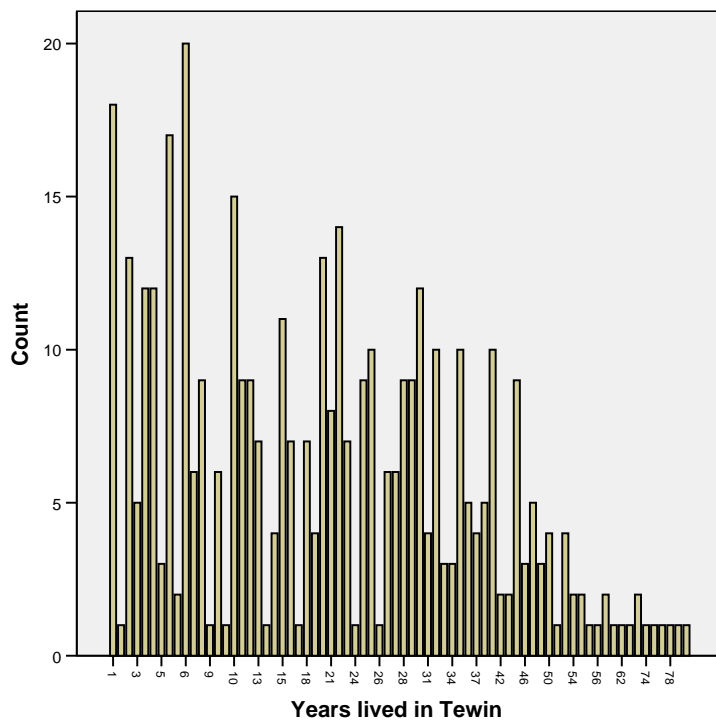
	Age 0-4	Age 5-11	Age 12-18	Age 19-24	Age 25-39	Age 40-59	Age 60-64	Age 65-74	Age 75 +
Male	36	34	38	30	43	185	50	61	47
Female	25	44	34	22	56	199	42	59	45

## Question 3

How long has your household lived in Tewin?

**Years lived in Tewin**

	N	Mean
Years lived in Tewin	412	21.58



**Years lived in Tewin**

	Frequency
Missing Data	7
Less than 1	16
1	18
1.5	1
2	13
2.5	5
3	12
4	12

4.5	3
5	17
5.5	2
6	20
7	6
8	9
8.5	1
9	6
9.5	1
10	15
11	9
12	9
13	7
13.5	1
14	4
15	11
16	7
17	1
18	7
19	4
20	13
21	8
22	14
23	7
23.5	1
24	9
25	10
25.5	1
26	6
27	6
28	9
29	9
30	12
31	4
32	10
33	3
34	3
35	10
36	5
37	4
38	5
40	10
42	2
44	2
45	9
46	3
47	5
49	3
50	4
51	1
52	4

54	2
55	2
55.5	1
56	1
58	2
60	1
62	1
70	1
73	2
74	1
75	1
76	1
78	1
80	1
83	1

## **Question 4**

How many of your household are...?

### **Amount of people in the household**

	Frequency
Full time Education	131
Employed	293
Unemployed	13
Retired	179
Homemaker	79

## **Question 5**

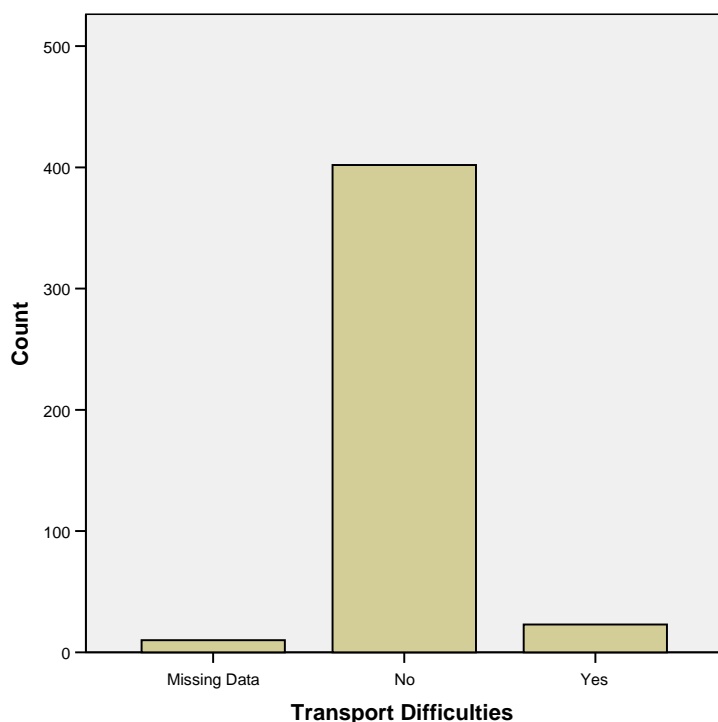
How many cars does your household use regularly?

### **Number of Cars**

	Frequency
1 Car	137
2 Cars	224
3 Cars	48
4 Cars	8
None	18

## Question 6

Do you have any transport difficulties accessing Doctor/Hospital?



**Transport Difficulties**

	Frequency
Missing data	10
No	402
Yes	23

### Transport Difficulties comments

Although we have cars ( and generally only use 1 of them) we are concerned that transport provision is poor generally. Our elderly neighbours are obliged to drive to access doctors, hospitals and shops.
Buses don't run frequent and have to arrange appointments around the buses. SO for that reason we feel it is inadequate service.
Difficulties parking at QE2 hospital sometimes unable to park. Short-term parking on site too expensive (hence local roads blocked with cars daily)
essential to have car for fortnightly visit to surgery. No viable alternatives.
household includes elderly person who has found it difficult to access doctor/hospital/shops and other amenities since she has been unable to drive. Bus service completely inadequate.
However there must be adequate transport available to service the village with access to any major service
I can not drive I rely on buses but buses do not go to the Welwyn surgery. Husband has to take time off work to take me.
I have some difficulty with walking but I have great help from my family that live locally (Tewin) that all have cars
I rely on my daughter Mrs Smith who lives only a few houses away
I will as I get older
If car broke down would possibly have problems with 2 young children
if the car breaks down
If we had no car, access to hospital or doctor could prove to be a problem with a limited bus service

n/a
No bus to old Welwyn?? No bus to WG City at suitable time if starting work for 8.30-9am. Have to get 7.05 - way too early.
No difficulties getting to the GP but a village surgery would be good for residents who don't have access to a vehicle
No direct public transport times not good for people who work
no public transport nearby
No, provided we are still able to drive
No: doctor, yes: hospital
Not at present
Not while we can drive. No parking at Lister Hospital Stevenage
not yet! but I may have in the future
Ok whilst able to drive - but if people do not have a car - very difficult to get to surgery
One adult member of the family does not drive and relies on partner or bus to access surgery in Hertford
only one driver, therefore taxi needed when that driver is away. There is no bus service which stops near Marden Hill
only two buses a day!!
Parking at QEII - lack of space and cost
public transport is inadequate
Retired person has trouble coordinating doctor's appointments with buses - 2 required for each leg, round trip takes whole day.
see item on back page
sometimes we have to rely on friends and family due to ill health
We feel strongly that the bus service should continue to enable villagers less mobile than us to access towns and the station.
We have to use 2 bus to get there one from Tewin and one from Welwyn Garden City to get to Old Welwyn
While I can still drive, after that it would be impossible.
With 1 car unavailable during working hours, Dr or hospital requires taxis - buses are infrequent
Yes if I cannot use car, bus services so irregular they are of no use. To get to hospital by bus is a mission
yes when can't drive

## Question 7

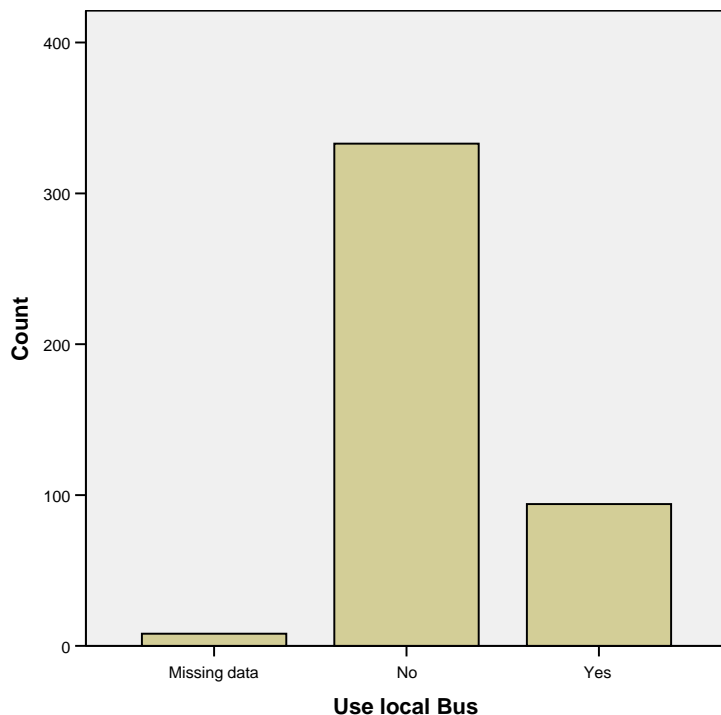
For each person in your household please indicate the main method of transport used for journeys to and from work, school or college during peak hour travel times.

**Transport Method**

	Frequency
Walking	66
Bicycle	15
Motorcycle	3
Own car	546
Car share	33
Scheduled bus	46
Train	49
Taxi	2
Not applicable	208

## **Question 8**

Do members of your household use the local bus?



	Frequency
Missing Data	8
No	333
Yes	94
Total	435

## **Question 9**

If yes, how often do they use the bus?

**Table of how often the local bus is used**

	Frequency
Daily to/from school	23
Daily for other reasons	12
Weekly	35
Monthly	30
Once or twice a year	52

## **Question 10**

Do you consider the bus service to be adequate for your households needs?

	Frequency
Missing Data	301
No	59
Yes	75

### Bus service comment

1st bus too late in the morning and not running 1hrly
3 evenings a week I could use the bus, but there is no evening service. 1 morning a week I could use the bus to get to Stevenage, but it would turn a 15 minute car journey into an all day expedition. Even with a free bus pass I would not use it.
A direct service to QE2 would help. More services to Welwyn North at peak times for commuters would reduce parking problems in Digswell
Additional services during peak times would be a great help
Adequate but a more frequent service would be better for elderly residents
As there is no school service to and from WGC and bus times are so restrictive most of our journeys including the school run have to be made by car. Also I feel this restricts teenagers in the village from being independent - no eve service - and reliant on parents transport
better timetable links with morning rush hour trains at Welwyn North
Bus is : uncomfortable, slow, inconveniently timed, dirty, unpleasant in wet/cold weather
bus service should come nearer to Tewin Wood, eg top of Bishops Rd
But it wouldn't be if we did not have a car or were unable to drive
comment re: 8 'would use the bus but see above Q6'. A bus is needed to WG City at 8am-8.30 rather than 7am.
comment re: use of bus 'but will do in future as child reaches secondary school age
comment re: use of bus 'not yet'. Very few
Could be more frequent
Could do with an early morning bus ie 6am to WGC for commuting
could not use it for work times and would use more to connect with rail service if better service
Doesn't connect with train times
Don't use it
frequency and route
Frequency of buses doesn't allow us to travel into WGC or Hertford without having to 'hang around' for the return trip
Have to drive car to get to nearest BR station
I may need to use bus service so I support its continuation
I only know what other people have told me. Buses are infrequent and time for shopping is short, especially in Hertford
I would use it more often if it was on time and better coordinated with the London rail timetable
If bus used to go to Hertford or WGC there is too much time elapses before a bus is available for the return journey
If I could not drive I would appreciate it more frequently and not such long waits in WGC
If I had no car, I would consider it useful.
If the service was better I would use it more
If there was a more regular bus service we would use it more especially to go to and from the train station
In frequent and indirect for shopping or public transport connections.
infrequent and stop too far from home
infrequent slow and not at times to suit shoppers or commuters
insufficient buses to access the local stations also cost £1.60 for a single journey so too expensive
Insufficient number of buses, too larger gaps. No service to Welwyn Village where main Doctors surgery is situated. No bus on Sundays or after 6.00 pm
It goes infrequently and only to WGC and Hertford
It isn't regular enough
Journey is slow, times irregular
More frequent bus service to WGC and possibly Stevenage in order for the children to go out more
More frequent service please & later running in evening; last bus from WGC to Tewin is 17:10
Morning bus is too early for the train at Welwyn North. I would use it if it left at 7.30am rather than 7.10am
n/a
need a later bus in evening to go to Welwyn North to go to London

Need buses later in evening and Sundays. Without a bus-cannot afford £10 for a taxi
Need the bus to run early in the morning to take the children to school and back again after school
No evening/sunday service
no experience of bus service so no comment
Non drivers depend on lift - infrequent buses in day and early evening mean trips to local towns not feasible except by car.
Not enough buses
Not enough buses return to and from Hertford
not enough daily services
only just!
Person 4 in household attends sixth form college in Hertford and therefore travels to school at erratic times. Buses are too infrequent for regular travel.
re Q8: too difficult to use
ref to Q6
see answer to question 6
see questionnaire for Q9. Times into Welwyn Garden City ten to be inconvenient
Should have frequent cheap mini bus service to Welwyn North Station.
The bus service is too infrequent and not very reliable
The last bus to Tewin leaves Hertford at 6.05pm this is far too early for teenagers
The schedule time of the bus does not allow for any delays and the children are often late for school (Simon Balle-Hertford)
There is no bus stop near Marden Hill
There need to be more buses and better connections to Welwyn surgery and QEII
Times not good for work
Times to WGC not appropriate to get to work or connect to other services. No convenient return bus for shopping.
Timing of buses not any use - last bus from Welwyn North Station 18.25 hardly useful for work
To infrequent bus service restricts working early and late working
Too infrequent a service for when we stop using the car in 12 months time.
too infrequent cars more convenient
Too infrequent we would use it more if more often
Very infrequent
villages need regular half hour service from 07.00 until 22.00 that related to train times at WGC and Welwyn North
we bought 2nd car because of poor bus service to station
Would be more likely to use if more frequent service at peak times

## Question 11

Please indicate how frequently your household uses each facility?

	Very frequently	Sometimes	Infrequently	Never	Unaware
Tewin Stores	183	109	72	40	2
Tebbutts Shops	152	89	86	65	4
Tewin Garage	36	59	141	136	4
St Peters Church	31	35	153	143	
Tewin memorial Hall	52	54	192	77	
Tewin JMI School	32	2	19	298	
Allotments	13		3	314	20
Scout Hut	28	1	2	293	19
Tewin pubs	86	150	124	35	
Mobile Library	7	20	28	274	29
Tewinbury Farm	9	37	228	95	1
Footpaths/Bridleways	236	100	39	23	
Police Van	1	2	21	268	68
Mobile Shops	17	24	49	231	50
Online groceries	27	39	37	258	7

## Question 12

What improvements, if any, would you like to see to existing facilities above?

### Improvements comment

(re: tewin stores) how long before the Post Office is closed?! Before the change in ownership of Tewin stores it catered for most domestic needs perfectly adequately and we rarely had the need to drive up to Tebbutts shop. Now, however, the Tewin stores is woefully and inadequately stocked, and the Post Office service is very slow. Regrettable. (Written in improvements box) Tewin stores to be better stocked and run more efficiently, as in the past. The retention of a working garage - Tewin garage should not be sold for housing development. As things stand at present it is hard to see how Tewin can be classified as a category 1 village.
1) I would/should use the bus service and will do in the future. 2) I am very disappointed Tewin Garage has closed. 3) I think the footpath / bridleways are a great benefit to the community.
1. sleeping policeman in road through village. 2. Bridleways - prevention of quad-bikes and motor=cyclists use. 3. Prevention of fly-tipping
A better grocery store
A better range of basic everyday groceries at Tewin shop. New toilets at memorial hall. Continued improvements to Tewin footpaths and bridleways.
A better village shop
A childrens play area/ground in Tewin. Recycling facilities
A hole in the wall machine
A list giving mobile services timetable
A more welcoming village shop. Tebbutts is so much better.
A village 'tea shop/cafe' (rose and crown/memorial hall/tewin stores?) where pensioners and other villagers could meet with friends. Tewin stores: an extension to selling local produce (farmers market - style)
Ability to collect prescriptions provided by Bridge Cottage Surgery at Tebbutts shop. In icy weather the hills down to Welwyn and Tewin Lower Green are treacherous.
Absolutely essential to maintain local stores and post offices, especially for the elderly and also to ensure improved transport facilities within and out of the village for elderly and infirm.
better bus service
Better childcare facilities

Better child's playground. Fishing facilities.
Better information on facilities
Better parking outside Tewin Stores
better public transport
Better selection of products in shop. Better public transport provided
Better services and supplies in Tewin stores
better shop and decent pub/restaurant and be able to go for a walk without being molested by dogs
Better signposting/upkeep of footpaths
better stocked shop
Better stocked shop. Tewin garage is very good - pity it has to close for good
Better stocked Tewin Stores, expand on allotment space available
Better stocked village store
Better, more frequent bus service to WGC, Welwyn North or Walton-at Stone
Both local pubs more welcoming with good affordable food. Tewin Stores with more basic household items and food.
Bus service extended. Old fashion street lights. No parking outside the school.
Close Tewin stores as is it poorly sited for passing trade and poor parking deters users
comment re mobile shops 'does not stop in parish - Burnham Green'. Village shop - Tewin stores needs improving - needs to stock things people want. Successful village shops elsewhere have decent bread etc at sensible (not necessarily cheap prices) Post office service needs improving - it can take 10 mins to get a simple stamp.
comment re: allotments 'used to but no longer'. Better bus service.
comment re: St Peter's church '(only churchyard)'
comment re: tewin jmi 'prior to sept 2006, every day (for 7 years)'
comment re: mobile library 'only comes during day when at work, would use frequently comment re: police mobile van 'only comes during day when at work, evenings would be good
comment re: use of facilities 'too early to say'. Too soon to comment.
Continuity of landlord at Rose & Crown. This pub could be the heart of the village if Greene King managed it properly
Create variety of provisions in Tewin shop (post office)
dog litter bins provided on main paths
Ensure Tewin stores post office survives
Expansion of Tewin Stores - can't get much in there and would like to. St. Peter's church has opportunity for improvement in its grounds eg wildflowers could be sown in disused areas, bird/bat boxes could be erected (local children could easily make these)
finding ways to support the shop
Fish van in evening, not day time
footpath from Godfries Close to the plume of feathers
footpaths / bridleways need more maintenance. The local roads need repairing and improving.
For No. 17 only - A small 'shopping' coach one day a week to W.G.C. or Stevenage supermarkets, rather like the smaller tourist coaches with luggage capacity (essential for shoppers). Pre-bookable essential to determine optimum size. It could circle the parish to pick-up. Could do likewise for adjoining parishes on 'their' pick-up days.
Garage to remain open. Stores to be better stocked and efficient. Church to be more family welcoming.
Generally, all the facilities need clear advertising of services and opening times; also contact phone numbers eg on a printed sheet delivered to households on a yearly basis. Specifically Tewin stores need new owners who are efficient and able to provide a traditional, village general store for all the community; and a reliable and trustworthy post office.
Happy with everything except bus service
happy with services provided
Happy with them as they are
I tried using the bus recently to go to Welwyn Garden City. It was late starting in both directions, 15 minutes on outward journey. The ride (by bus standards) was bone-jarring and this would put me off using the bus again, which is a pity. Why not have a mini-bus running more frequently? The provision of an effective bus service should be taken seriously.
I would like the fish van to come to Tewin village, and Tewin stores to stock a wider range of basic items
I would use the local shops if there was more organic and local produce

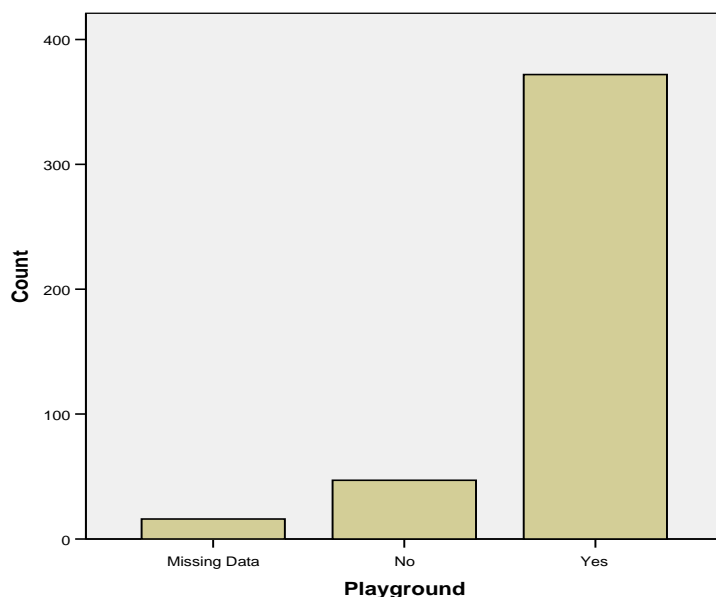
I would very much like Tewin Stores/PO to be re-sited at say the Rose and Crown Pub. Plenty of car park, central to residents and a coffee shop (small) could even be there. The village would be more central.
If Tebbutts could issue new road tax licences
If the village pubs were worth visiting we would use them
Improved range of products at Tewin Stores
Information on fish van
It is a shame that Tewin Garage has now closed
Keep a post office in the local area
Keep the garage. More 'basic' foods in the shop
lighting in the street
local park much needed
Local stores opening longer hours for people that work
Longer shop opening hours at weekends
Loss of Tewin garage a great shame!
mobile butchers van mobile veg van (organic)
mobile van available at different times so accessible to people who work. Shop to have more everyday stock
more awareness regarding the mobile fish van and library. I was unaware of these facilities!
More basic provisions available in Tewin Stores
More basic supplies at Tewin Stores
More comprehensive stock in Tewin Stores, better service
More facilities for children - eg proposed playground for under 8 yr olds. Youth club.
More facilities for Children
more footpaths and clearing of existing footpaths
More footpaths around centre of village and lighting. Almost impossible to walk children to Memorial Hall after dark. Clear signs for dogwalkers to remove mess from green.
More frequent bus service. Tewin stores to be more comprehensively stocked.
More general products in Tewin Stores
more groups for the under 5's. swings etc (I believe they are under construction). yoga in the evening 7.30pm (!!)
More information on mobile shop - fish or meat van . Allotments - difficult to obtain for village residents
More organised events
More parking spaces in Godfries Close
More public transport
More publicity for facilities on offer
More regular and visible police presence. Speed traps through Village. The state of roads in and around the Village are very poor especially for cyclists.
More use of village hall e.g. book club / bridge
More use should be made of the scout hu ie Youth club. Continuation of footpath from Lower Green to Upper Green for pedestrians.
More variety of products in Tewin stores
n/a
need for a playground for the young of the village
no comments
No reference to bowling club - facility promoted by the parish for exclusive use by the elderly many of whom drive there from outside the village increasing traffic.
none
None
none (re: In favour of playground comment 'but not on upper green')
none, possibly Tebbutts open on a Sunday
Not used often enough
Off road car parking
ok as they are

Parking arrangements for school dropping off/collection
Parking in Cannons Meadow due to Tewin JMI school when they have school functions. Some parents inconsiderate when parking.
Pavements around the village. Better road drainage.
People sticking to footpaths!
perhaps more diversity in Tewin stores with more affordable products
Play area in village. Recycling bins for cardboard, clothes and plastics.
please see questionnaire for q11 and 12
Police Mobile Van - to be diaried to come at different times to reach more members of the community ie not just those at home all day! Tewin stores - to offer more general products.
Police van unnecessary and waste of resources. Creates false perception of lot of crime.
Proper run shop with everything in it
quite happy
Quite happy as they are.
re-open 'The Duck' pub
Re:Playground - ONLY if situated near memorial hall for children's safety
Recycling facilities at Tewin Water. East Herts Council are very slow to complete arrangement. I have been trying to get this issue to start for 4 years and still waiting
reopen the 'duck' PH
Saddened to hear the garage will be closing
Safe footpath/pavement to Upper green
Safe path up to cricket pitch and plume and feathers
see questionnaire - illegible
see questionnaire 177
Shop could stock DVDs maybe open later and stock more basic household requirements as well as local farm produce
small amount street lighting (near village green)
Some form of street lighting on Green
Something for youngsters (10 - 16 yrs) to do - no youthclub!
Sometimes footpaths are overgrown
sorry to see tewin garage close
street light in grass warren
Tebbutts and Tewin stores to provide a greater range of food and groceries (by possible expansion)
Tennis/Cricket Club rennovated, road entrance repaired
Tewin garage is an important village facility. Its closure is a significant loss to my family.
Tewin Garage restored
Tewin garage to re-open
Tewin Garage will close on 31-1-07. This facility will be very much missed.
Tewin store could be better stocked with basics and opening times extended
Tewin Store could benefit from a much wider range of goods e.g. fresh veg. light bulbs, Ready meals etc.
Tewin stores - a proprieter who knows what they are doing!
Tewin Stores - new management!
Tewin stores - very disappointing - lack of stock - interior layout! grim! A scout group in Tewin would be great.
Tewin stores clean and refurbished
Tewin stores has bags more potential than is being utilised. Visiting at random times I have not been able to buy basics such as bread and milk or a newspaper. A good range of fresh fruit and veg and a deli would be a bonus.
Tewin stores open until 7pm. Re-open Tewin garage as it was. Rose and Crown to offer meals from 5pm. Mobile library available Saturdays. Police mobile van to provide occasional evening session.
Tewin stores to be better stocked
Tewin stores to become more village orientated
Tewin Stores to cater for people of all incomes including some cheaper staple items

Tewin stores to offer a cheaper variety of basic food and household needs. Tewin garage has now closed - a loss to the village. More clubs for younger people.
Tewin Stores to sell more food - i.e. cheese, veg., local produce; Tewin Garage to remain
The footpath extended from Godfries Close to the tennis courts. The lane from Tewin Hill to the tennis courts is particularly hazardous to pedestrians
The memorial hall should be a more used focal point for the village
The provision of a bus stop on the WGC/Hertford route somewhere within easyish reach of Marden Hill
The scout hut and garden looks dishevelled and in my opinion needs some TLC. In desperate need of redecoration and repair. To make the scout hut garden more secure eg higher fencing
The village shop need experienced staff
To reopen "The Duck" and improve the food at the White Horse. There is nowhere to go locally for a decent, honest meal.
Traffic calming - to enforce speed restrictions and stop through traffic. Large vehicle ban.
village policeman back, strict speed limit
village shop to stock basic necessities
village shop used to use regularly but so often closed early became unreliable
village shop: very pricey
village store -
Visible policing 24/7, with resident officer. Restore village police house.
we are happy with the existing facilities
We hope that Tewin doesn't lose its garage or post office
We would like to see these facilities remain and would like every effort to be made to keep this village the lively vibrant one it is today
WHAT POLICE!
wider range of basic goods in village shop
will use pubs more frequently once the no smoking ban comes into effect
Would like to know when library and fish man came
Would like to see "The Duck" reopened
Would like Village shop to stock basic items like vanilla ice cream, milk chocolate, envelopes
youth club

## Question 13

Are you in favour of a children's playground in the parish?

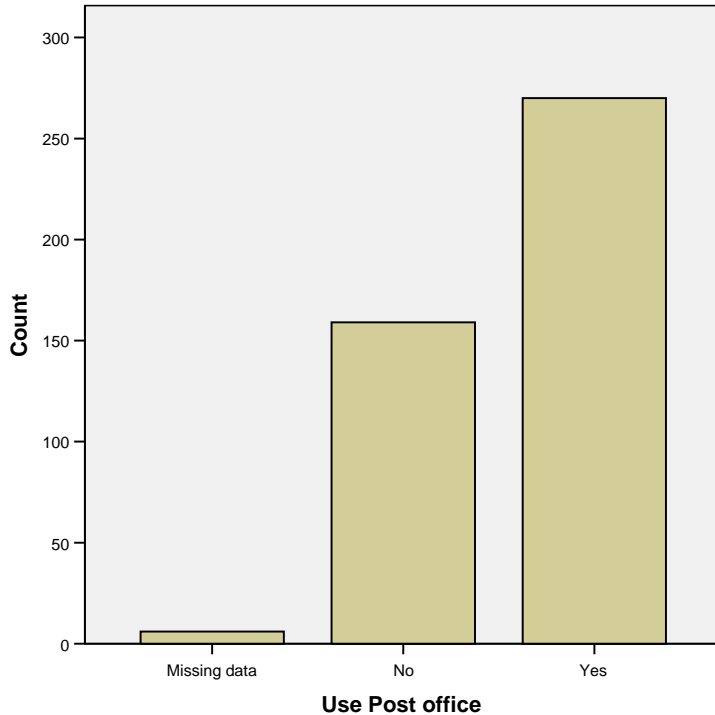


**Playground**

	Frequency
Missing Data	16
No	47
Yes	372
Total	435

**Question 14**

Do you use the post office facilities at Tewin Stores?



	Post Office
Missing Data	6
No	159
Yes	270

**Question 15**

What other facilities or services would you like to be available in Tewin?

**Other facilities comments**

	Frequency
( comment re: playground - 'subject to location') Youth club	1
(comment re: P.O. 'Twice a year') Hole in the wall money machine, re-cycling facilities within village	1
(comment re: P.O. use - 'Tebbits is more convenient') None	1
(re: playground) yes, but not on upper green beside the road but located near to where the majority of children live and within safe, walking distance	1
(re: use of post office - 'extensively @ Tebbutts) Quite happy with the current level	1
(re:playground- 'depending on site') Regular litter pick-ups. Fly-tipping cameras. Traffic calming measures.	1
(Uses Tebbuts P.O.)	1

A bus service that goes to old welwyn	1
A Butchers and Bakers	1
a cash point machine	1
a chemist, OAP club	1
A childrens playground should only be in a very public well-used area, as one tucked away on Upper green (as proposed) will surely attract anti-social behaviour as the previous one did. Village playgrounds are hardly ever used unlike their counterparts in towns.	1
A comprehensive form of information as to the bus services distributed to everybody	1
A decent pub, youth club	1
A doctors surgery!	1
A farmers' market in the Memorial Hall	1
A payment point to top up prepayment gas and elect cards and mobile phone cards at a local shop	1
A tea room and a small garden centre would be nice	1
Adding more facilities would turn the village into a town	1
Additional re-cycling possibilities - cardboard, plastics, food-packaging	1
Anything that gives enjoyment to Tewin residents	1
Area for 'flyball' for dogs	1
As above better childcare facilities	1
Better bus service, youth club	1
Better control of teenagers at Halloween!	1
Box schemes - more local trading through a farmers market at memorial hall? Fresh, local fruit and veg and meat. In the autumn could tewin orchard let local people havest apples for themselves and pressing?	1
Butcher	1
Butchers, greengrocers	1
cable TV	1
cash machine	1
Children's playground. Local farm produce - fruit and veg (good selection) including organic.	1
Childrens playground-Properly fenced in with a childproof fence so toddlers cannot escape if you are managing more than one child-especially if there are roads nearby	1
coffee shop	1
comment re: 14 'use Tebbutts'	1
comment re: playground 'I was - until I read how ridiculously expensive a playground is to install'	1
comment re: playground 'no strong views'. Comment re: use of PO 'use Tebbutts'	1
comment re: PO 'would rather use Welwyn Garden City!'	1
comment re:playground 'depends where it is'	1
comment re:playground 'have already near B. Green'	1
comment re:PO 'but use them at tebbutts shop'. None - we are a country village and there are plenty of facilities nearby.	1
comment re:PO 'use Tebbutts'. Childrens play equipment updated near Burnham Green (sorry does this come under Tewin?)	1
Cycle paths from Tewin Wood to Tewin and Tewin to Welwyn Garden City	1
Definitely a childrens playground. This would be a perfect opportunity for children and adults to socialise in the fresh air.	1
Disposal of garden rubbish	1
Doctor's surgery for the elderly people without transport	1
Doctors Surgery	5
Dentist. Some form of take-away food store.	1
Farm shop. Pet and horse feed.	1
Farmers market? In memorial hall	1
Fish van	1
Footpath links with lower and upper green and orchard rd to bulls green	1

free bus to WGC or Stevenage maybe once a month	1
Free cash dispenser. A petrol station and motor garage available to all residents (ie not approved account only). A Tesco Metro style store with customer parking. A 'free-house' public house.	1
garage	1
Garden rubbish box/collection. Children's playground overdue.	1
greater facilities for teenagers	1
happy the way it is	1
Having a Doctor back in the village hall. We understand how hard it is for GPs. However a visit once a fortnight would help the elderly.	1
I am happy with what we have got	1
I am not aware of a drop in centre for elderly - somewhere to meet and have coffee and a chat or a youth centre, these will be good	1
I am very sad to hear that Tewin Garage is closing as I have used it for many years. Car repairs and petrol and a great loss for the village.	1
I would like dog wastebins which might encourage responsible owners to clear up after their dogs	1
I would like to see a tea room in the village hall. Other villages such as Braughing and Westmill have them	1
Improved access to doctors / hospital. Improved access to railway station	1
improved recycling	1
Improved sports pavillion	1
In these days of computers reconsider reopening a village doctor's surgery	1
Inadequate range of facilities for different age groups of children	1
Increased police visibility. Village doctor.	1
Keep fit / aerobics / pilates or similar available during the evening, maybe in the memorial hall	1
List of activities in village given to newcomers	1
local newsheet or information listings (like the tewin footpath map)	1
local taxi service	1
Local youth club for cinema/sports/disco for the youngest	1
lottery point in shop. ATM (cash point) in village	1
lottery, veg	1
Measures to slow down traffic	1
More classes 1 evening or day-time. Art/drawing, photography, history of art etc	1
More footpaths, lights, better shop with more choice	1
More quizzes, group clubs	1
more shops another pub(?) more competitive than others	1
More social meetings for O.A.P. Senior citizens	1
More street lights	1
More youth activities such as more use of memorial hall archery, clubs, etc	1
none - village is perfect	4
Not lived in village long enough to know if facilities are lacking	1
note - use post office facilities in tebutts shop at burnham green	1
Once a month skip	1
Online information about clubs, classes, social activities. A yoga class? A more frequent bus service to Hertford / WGC.	1
Playground, open farm, tea room, print shop, archery club	1
Public Internet Access	1
re-cycling banks	1
re-intake(?) policeman living in Tewin responsible for surrounding area	1
re post office 'Tebbutts'	1
re use of PO 'see above comments I use Burnham Green post office'. More regular police in evenings/weekends.	1

re: playground 'there is one - creates rowdy teenagers in the summer'. re:PO 'use the post office at tebbutts'	1
re: playground 'we have one at Burnham Green Village Hall'. re: PO 'I use the one at Tebbutts'	1
Re: playground - 'I think it is an absolutely fabulous idea and it should have happened yrs ago. Well done.'	1
re: playground - the proposed site is most unsuitable. I have written to East Herts DC suggesting an alternative	1
re: PO 'Tebbutts'	1
re: use of PO 'use PO at Tebbutts'. More frequent bus service	1
re:playground 'absolutely'. re:PO 'all the time'. Cafe for mothers and children(!!)	1
re:playground 'not on upper green!'	1
re:PO 'Tebbutts'	1
Re:PO 'use Post Office at Tebbutts shop'	1
re:PO - 'Tebbutts'. Youth club	1
Recycling centre - unobtrusive so that it can't be seen by houses. Perhaps behind Memorial Hall	1
recycling centre	1
recycling facilities in village. Farmers market in village hall. More live music events. Cream teas facilities for visitors. Pilates in evening locally	1
Reinstatement of the weekly Doctors surgery.	1
Repairs to the equipment at the children's playground near Burnham Green otherwise the children could be in danger of falls etc	1
resist the closure of local post office - ie Tewin and Tebbutts	1
scout or boys group	1
see 12	1
shop to do fax, photocopying, email etc	1
Shoppers shuttle bus twice daily, WGC or Hertford, centre to centre direct.	1
Simple playground for young children close to school. There is already existing an attractive play area at Burnham Green Village Hall	1
Some sort of childrens nature study facility to enable them to appreciate the unique environment they live in	1
some street lighting	1
something for the teenagers to keep them out of trouble	1
squash courts, gymnasium, indoor tennis	1
street lights (grass warren) for the elderly. Dog waste bins. Recycling bins.	1
street lights as I have hurt myself in the darkness which wouldn't have happened if the road was lit	1
street lights, NTL (cable)	1
summer camps for school children, speed restriction measures	1
Sunday school services for the children	1
Surgery in the village hall should be restored	1
Tewin Garage back!	1
Too soon to comment.	1
village based recycling facilities	1
village policeman, shom failing (?) better, more frequent and more responsive policing, particularly around the bus shelter in Lower Green	1
We do use other pubs and activity centres in Hertford and WGC but not in the village	1
We use the post-office facilities frequently at Burnham Green	1
wild life and history events held in village hall etc	1
youth club	1
Youth Club	1
Youth club or equivalent in the village hall	1
Youth club so teenagers have somewhere to socialise. Information board by telephone box.	1
Youth cub. Art classes.	1

## Question 16

Please indicate for each member of your household, the activities they participate in within Tewin?

Activities	
	Frequency
Bowls	26
Tennis Club	155
Badminton	26
Cricket Club	17
Brownies/Rainbows	25
Yoga/Pilates	39
Walking	693
Recreational cycling	323
Under 5's groups	38
Horse Riding	29
Other	73

Other Specify, 1<sup>st</sup> persons comment

	Frequency
(Didn't know yoga existed!)	1
ALLSORTS. THACS	1
Art Group	1
Art Group, THACS	1
Birdwatching	1
christian view - [?] coffee mornings	1
church - st peters	1
Clay pidgeon shooting	1
coffee mornings with a christian viewpoint	1
dog training	1
dog walking	1
Friends of Tewin, Tewin soc, THACS	1
intend to do yoga	1
jogging	1
karate in hall	1
keep fit	1
neighbourhood watch	1
none	1
painting and drawing	1
poultry keeping(?) (may want to check this as not v legible)	1
quizz night at Rose & Crown	1
ringing	1
running	2
school swimming pool	1
social events in rose and crown	1
society meetings	1
St. Peters	1
tapestry/church allsorts ladies group	1
Tewin Society, THACS	1
THACS	6

THACS (shows and open gardens) Tewin Society, Oral History and Tewin Book	1
THACS events and outings Tewin Society	1
THACS society, Tewin Society	1
THACS, Tewin Soc., various organisations + activities such as fete, jumble sale etc	1
THACS, Tewin Society	1
THACS, Tewin Society, Friends of Tewin	1
Voluntary wardens nature res, hort/arts soc	1
Wildlife watching	1
would do yoga but class is full in local hall	1

**Other Specify, 2<sup>nd</sup> person's comment**

	Frequency
Art Group, THACS	1
church - st peters	1
did football	1
dog training	1
Friends of Tewin, Tewin soc, THACS	1
jogging	1
karate in hall	1
keep fit	1
Monthly Christian coffee mornings	1
nature photography	1
neighbourhood watch	1
painting and drawing	1
quizz night at Rose & Crown	1
running	1
school swimming pool	1
social events in rose and crown	1
tap dancing, running	1
Tapestry Group, Book club	1
Tewin Society, THACS	1
THACS	5
THACS events and outings Tewin Society	1
THACS, church, gardening, delivering newsletters etc	1
THACS, Tewin Society	1
THACS, Tewin Society, Friends of Tewin	1
Voluntary wardens nature res, hort/arts soc	1
Wildlife watching	1

**Other Specify, 3<sup>rd</sup> person's comment**

	Frequency
martial art	1
neighbourhood watch	1
Pub	1

## Question 17

For retired persons only: Would you like any other facilities, services or activities which are currently unavailable?

### Retired facilities

!)seats in Tewin Wood for disabled people who can only walk short distances and would appreciate the means of having occasional rests
(? illegible word) a local taxi service
A club for tea and biscuits and a chat once or twice a month
A method of checking on older people living alone especially people who have no family
A regular monthly luncheon club for over 50s
A rota of drivers to take those without transport to local surgeries clinics and hospitals. This would require local surgeries etc to cover cost of insurance
A vehicle to take people to the doctors. A regular attendance by nurse to take blood pressure etc. A taxi to Welwyn is very expensive, voluntary car service?
Adult education classes
As far as I am aware there are very few, if any, activities for retire people living in the village. A social club I feel sure would be appreciated and well supported.
better bus service
bridge club
chemist, club of some sort
coffee mornings, interesting speakers, craft classes
Croquet club/pitch, Table Tennis facilities, Street lighting
Doctor's surgery
Greater contact with adjacent villages to discos and ...(?)
guides
improved access to doctor
improved bus service - bus every 1 and a half hours chemist, hairdresser
Local GP clinic at Memorial Hall as there used to be. Better bus service.
meeting people
more public transport
n/a
no
No
no thank you
None
not able to comment at this time
Not at the moment
not particularly
pharmacy
possibility of a weekly 'club/meeting' - chat etc
Prescription delivery
reduction in rates for over 70
see 12
See No.12
Senior Citizens without a car. A brown bin for garden waste
Shuttle bus service to Welwyn--Small vehicle. More awareness of mobile library.
simply prepaid information for the local bus service

social meetings
some keep fit classes in village hall or line dancing etc
Subsidised hospital taxi service and prescription collection.
surgery in the village should be restored
There are already many facilities and activities. It is a question of joining in.
Too soon to comment.
Transport to WGC - shopping 2 x weekly
voluntary help for aged eg garden or handy
We are reasonable served so long as we remain active and fit enough to look after ourselves
Would like more things for the older people

## Question 18

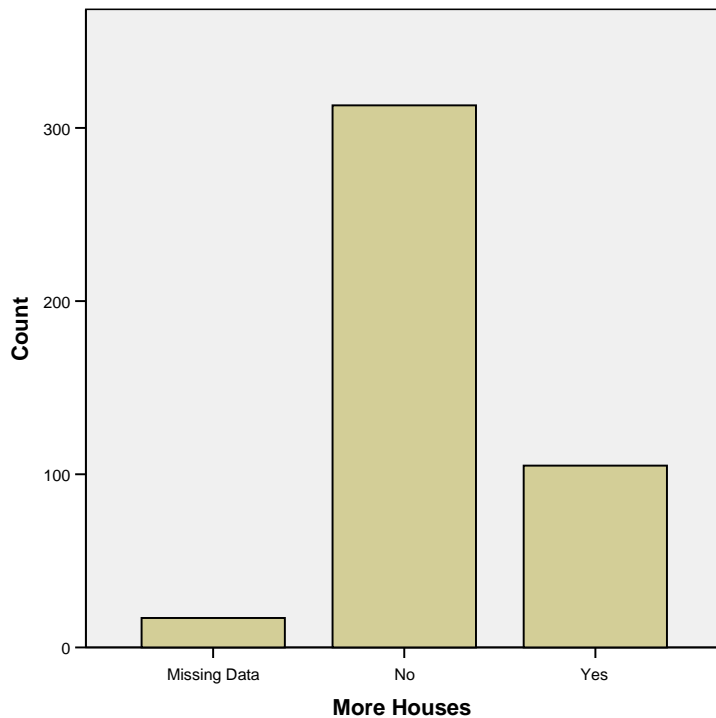
For 11-18 year olds only: What facilities or activities would you like to see in Tewin – relevant to your age group?

### Young facilities

	Frequency
a go-cart track and skateboard track	1
A netball club, a social club for 9 - 17 year olds because we have nowhere to make friends at the moment. Also it would be nice if the swings in burnham green were re-done. A lake with ducks.	1
A youth club	1
Art Society	1
Badminton specially for this age group. A cafe for kids. Bike jumps. Playground for older children. Regular ice cream van. Youths football club and cricket club. astro turf running track	1
Cycle track, Dirt jumps for bikes	1
Football team	1
Good to have a meeting area for teenagers where they could meet together	1
I'm happy the way it is, as its somewhere to get away from it all	1
More regular buses weekends/school holidays	1
music events	1
n/a	1
No ideas (from our 2 children)	1
non	1
none in the house	1
see 12	1
Social club for teenagers	11
Socials where can meet teenagers in the area	1
Target/Clay shooting. Safe cycling area.	1
There should be a cycling club	1
Youth club	12
boys brigade Scouts and Cubs, Guides, First Aid classes - red cross or St. Johns. Football tuition and cricket.	2
youth club in village hall (6-8pm) for 2 nights per week to play table tennis / snooker. Listen to music (members only)	1
motorbike club for off road	1
table tennis club	1

## Question 19

Does Tewin need more houses?



**More Houses**

	Frequency
Missing Data	17
No	313
Yes	105
Total	435

## Question 19a

If yes, what size of development?

**Size of development**

	Frequency
Individual houses	27
Up to 12 houses	45
13-24 houses	40
Over 24 houses	9

## **Question 19b**

How many bedrooms in the housing?

<b>Style of housing</b>	
	Frequency
Terraced	51
Detached	65
Semi-detached	33
Bungalow	28

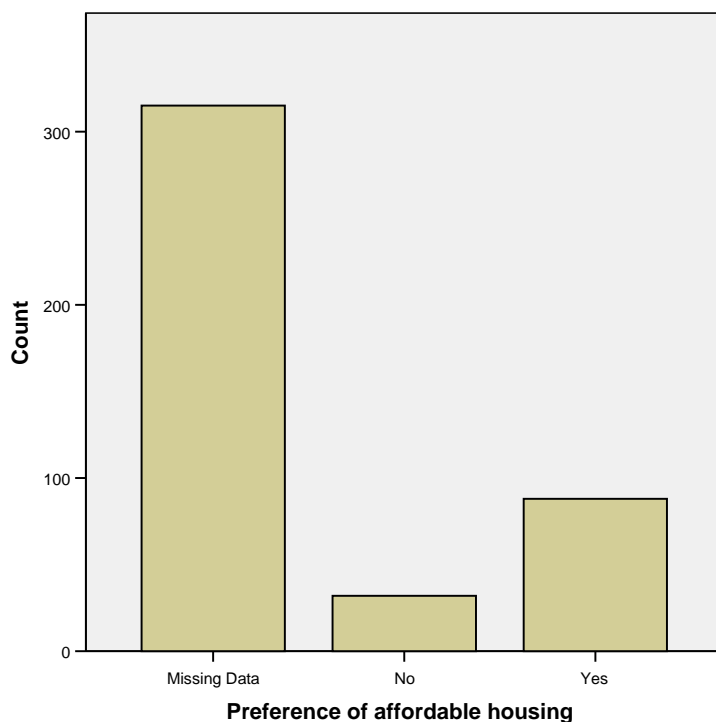
## **Question 19c**

How many bedrooms in the housing?

<b>Bedrooms</b>	
	Frequency
One	19
Two	50
Three	77
Four plus	27

## **Question 19d**

Should preference be given to the provision of affordable housing?



<b>Preference of affordable housing</b>	
	Frequency
Missing Data	315
No	32
Yes	88

## Housing comments

(comment in ref to Q19) Infilling of individual houses acceptable where needed
(comment next to 19d 'Pointless!')
(re: 19a - 'plus low market housing') see attached sheet
[Ans to 19 - only if the village can develop more with better shop etc]. In favour of more first-time buyer houses but only if the village can develop more with a better (and better located) shop etc
19b and 19c circled with comment 'Whatever is determined by 'affordable' for local people. Any development must be on a small scale so as not to destroy the village atmosphere
3 bedroom houses are much more flexible for use - in any situation
a housing policy that attempts to employ development (?) a rural structure rather than an urban semi/detached one off approach
A small amount of homes would be acceptable but any more would inevitably lead to further development and destroy the rural nature of the village.
Additional housing should be targetted at organic growth of the community to provide opportunity for younger generation to be part - and remain - of the community
Additional housing will destroy the character of this truly unique rural village
'affordable' housing is only affordable for the lucky first owner given the right to buy
Affordable housing is a misnomer - all houses are affordable by someone if they are occupied - if you mean 'cheap' housing - profits will be made and they will no longer be 'cheap'
Affordable housing is a misnomer. Houses would be bought cheaply and sold on at great profit and then not affordable.
Affordable housing needs to be defined. Does it mean Govt. subsidised dwellings, blocks of flats to rent or buy, a return to council housing?
Affordable housing should be built in towns where all facilities are easily available - transport for low income families in rural areas costs circa 25% of net income - not practical!!!
Affordable housing to a maximum of 24 houses only
already overcrowded
Care is needed not to destroy the character of the village, more houses could put a severe strain on existing infrastructure - especially roads in the vicinity
comment for 19b & 19c 'mix'. For youngsters who have grown up in the village
comment re:19 'def not'
development should be low-level no answers to 19b, c and d. Depends on the needs of the time
Don't feel I have enough facts(?) to comment on housing, but if locals are forced out because of raising up market housing then provisions should be made for affordable housing but only for the local community
Existing infrastructure inadequate for further development - roads/schools/leisure facilities
Homes for single people to continue to live in the area
Housing for the young who can't afford a big mortgage more houses to rent
Housing in Tewin should be limited to affordable housing to meet a particular local need.
housing needed for young people who have to move out of the village for independent accommodation
Housing should be for vital services only
housing should be on in-fill land only and NEVER on green belt
I think new houses are absolutely necessary to keep this village alive with young families who will use the school etc etc
if more houses are built
Infill developments only
Infilling destroys character. Build well-spaced pairs of semis, landscaped, play areas and highly insulated.
Infilling in back gardens is changing the nature of the area
large increases in housing will create problems with transport, congestion on the road.
Large rooms - not too many, for older people. Some infil.- design in keeping with rural village (not like closes in Tewin - Godfries etc) Some for younger people ie small terrace attractively built ? subsidy for locals + rental properties
many young people have to leave Tewin - there should be some starter homes and ones suitable for young families at an affordable price

mixed styles, sizes and costs etc if necessary
More houses with enough bedrooms to house families with children could mean more children at Tewin school (where I understand members are on the decline). Progressively fewer children at the school could lead to its closure
need' is the wrong word, with the pressure on housing which affects the whole of the South East we shall get them whether we like it or not
Need a mixture to allow and maintain our diverse community
need for properties that retired residents can down-size to in order to release larger homes that were built for families who would then use school, shops and sports facilities.
No houses at all not even one!! Leave it as a village.
No more housing required-additional housing would spoil village atmosphere
No strong view
no to q19 but that should not exclude me from a view on the other questions if it goes ahead
Not preference but included maybe yes
Not sure about bungalows. Perhaps there is a real need?
ONLY affordable housing - possible to rent, for the younger generation, starting out to enable them to stay in the village
Preferably rented for young couples to start in.
Private pensioners apartments? But a good transport service would be needed for elderly folks.
re 19 'this is an irrelevant question houses will come to Tewin anyway'. You cannot build affordable housing without a massive increase in public transport.
re 19a 'as long as they are sympathetic to area'
re 19a 'small infill'
Re: 19 'I don't know'. I have not studied populaton needs in area but if necessary would not object to small development.
re: 19b 'mixture'
re:pref 'for local people forced to move out of village due to costs'. Village infrastructure will need to be addressed however - roads, traffic, schooling, shop etc etc etc
reason being is that houses are not looked after by the council share / contribution - ends up with unkept houses grouped together. I have had this experience myself with housing association.
see questionnaire for comment
small scale housing development respecting the local environment especially 'sustainable' developments with improved local facilities and public transport to facilitate. But not 'mass developer' housing
Starter homes needed
stop planning of building work on green belt. Affordable housing should be aesthetially pleasing however with house prices as they stand this is an impossibility. Tewin caters for the wealthy middle aged group
Style to fit surrounding area
Tewin's access roads will not support more traffic. Improvements so called of the roads would destroy ancient verges and the rural nature of the village
Tewin is a village, with rural facilities
The 'law of supply and demand' for property in Tewin can perhaps be better defined by estate agents in Welwyn Garden City, Welwyn and Hertford. Has any one an actual idea of the number of people who would like to live in Tewin if the right property for their needs became available. We live in a world of harsh reality not Dreamland.
The existing Tewin house market will not accomodate house prices well below the current lowest prices. Supply / demand economics have to be accepted.
The green belt must be protected. Tewin must not be spoilt by large scale expansion. Within the boundaries of the village as now defined there is scope for small scale development
The local roads can not support more traffic. Of all the places I have lived Tewin/Bramfield has the worst maintained roads I have ever experienced.
The style of housing should reflect the existing character of the existing villages
The village will contract(?) if facilities for young families are not forthcoming at affordable prices. The school nos are down now. Well-heeled people will send their kids to private educ
this is a very poorl phrased question. THE range of reasons for a yes/no answer is wide and inferring anything meaningful from a majority yes/no impossible
This villaage does not need further building

To use panshangar to extend it really necessary would be good.All routes ready no damage to green belt if used (aerodrome area)
Using available infill space but in keeping with the village environment
Very unlikely. No space or willing to provide. Born & Bred in Tewin, few of my friends live in Tewin. Affordable housing would have helped.
village is big enough
Villages are priced out of available accommodation by incomes
we are opposed to any large scale development or any development which would damage the rural character of Tewin
We do not know enough about the situation in Tewin to offer an opinion.
We need affordable housing to keep young people in Tewin and stop it dying out.
We should resist any further extension of the village boundary and oppose more ribbon development between the village and the wood
we would welcome housing for first time buyers and older residents who wish to down-size but remain in the village
Without knowing housing need difficult to say. First homes are usually the problem for young people.
Without young families coming into the village the school and under 5 facilities may suffer. Likewise Rainbows/Brownies/Tennis etc

## Question 20

Are you satisfied with the following in and around the village?

		Level of importance				
		1 Count	2 Count	3 Count	4 Count	5 Count
<b>Seat and benches</b>	No	36	50	86	27	25
	Yes	348				
<b>Litter bins</b>	No	82	52	50	16	19
	Yes	289				
<b>Lighting</b>	No	86	37	45	24	38
	Yes	242				
<b>Pedestrian walkways</b>	No	105	56	42	11	19
	Yes	240				
<b>Verges</b>	No	50	46	66	25	15
	Yes	273				
<b>Footpaths</b>	No	108	56	31	12	8
	Yes	323				
<b>Street cleaning</b>	No	71	54	48	19	7
	Yes	291				
<b>Road maintenance</b>	No	144	57	23	9	10
	Yes	131				
<b>Road drainage</b>	No	142	65	32	12	10
	Yes	315				
<b>Road markings</b>	No	78	36	46	26	11
	Yes	260				
<b>Dog waste bins</b>	No	76	33	46	18	22
	Yes	138				
<b>Refuse collection</b>	No	134	33	16	7	10
	Yes	356				
<b>Recycling facilities</b>	No	129	49	27	9	12
	Yes	207				
<b>Trees and their maintenance</b>	No	73	64	47	14	5
	Yes	310				
<b>Parking</b>	No	63	47	66	19	10
	Yes	257				

### Seat and benches comments

could have more
Could make a few more
Few more welcomed
Good for village life and the elderly
I dont walk round the village so I do not really know about the things listed.
maybe one on upper green
More needed, Upper and Lower Green
more required
need more around the
non-existent
Not aware of locations yet
not enough
Not enough or they're vandalised
not in this area
Overall comment. There is a reason from time to time to complain about wear. Bumps and gullies in the roads and lack of pavements, and stretches of road liable to flood easily but if people are expecting 100% satisfaction in a list such as this, or want more and more facilities, bins and parking bays why do they want to live in Tewin. (Tewin Wood perhaps should have its own survey as it is not in village)
see under No. 17
should be more seating
Tewin's roads are not suitable for the heavy vehicles which now use them. They are not wide enough - which leads to degradation of verges and dangerous holes where banks have been eroded. This makes it very difficult for cyclists. (and dangerous!)
They are well kept but more needed
Too soon to comment.
We don't use Tewin Centre as we are closer to Digswell, so we cannot comment on most of this.
We don't visit Tewin very often so we are unable to give an opinion
would be nice to have more on walk

### Litter bins comments

	Frequency
could be more	1
could do with a few more and maybe the enclosed ones so the wind doesn't blow rubbish back out	1
didn't know we had any	1
Dog litter bins	1
green please	1
Haven't noticed them	1
Larger, closing lid bins needed in car park	1
Litter bin required grass warren area	1
more required	1
need dog refuse bins	1
Need more in whole area	1
Need regular emptying	1
not aware of them	1
not emptied enough	1
not enough	4
not evident	1
not in this area	1
people should take rubbish home	1
Should be emptied weekly	1
Should be more and dog waste disposal ideally by the pond	1
Shouldn't be needed	1
the bin near the tennis courts is often overflowing - needs frequent emptying	1
The tennis court area needs more than 1	1
Too much litter thrown out of car	1
Too soon to comment.	1

## Lighting Comments

2 people in household with different views
Adequate for a village
As a driver in the evening when its dark you cannot see pedestrians
avoid light pollution
Avoid light pollution please
Avoids light pollution but is pitch dark on Hertford Rd & village green
could do with more street lights
do not wish to see village 'urbanised'
Don't cause light pollution on Lower Green
Grass warren and Cannons Meadow should have streetlights
grass warren area for the elderly
Harwood close - godfries close unlit
householders allowed to illuminate their houses inappropriately
I do not wish for street lighting around village
I use my car for the shortest distance if dark
inadequate lighting - more important with no pavements
Insufficient lower green/queen hoo/bramfield rd
Light pollution is becoming a problem
Lighting in or near bus shelter
lighting is ugly - detracts from Tewin's natural beauty
Limited but ok
lovely to have no street lights
more please
more required
More street lighting through village
More streetlights would be very invasive
need lighting as very dark in the close at grass warren
need lights on lower green - dangerous
Needs some light near shop and lower green
No lighting at all
no lighting in Cannons Meadow
No lighting in village centre makes walking difficult at night
no lights
No lights required in the wood
No need for lighting in rural area
no street lighting
No street lights to tennis cts and other areas in village
No streetlights please!!
non existent
not enough
not much of it!
Not needed
old fashion lights
on edge of village therefore less important
one or two lights on main highway
Only in main village needed
particularly at station
People who moan: get a torch!
please no more

poor around lower green
poor no street lighting
prefer no street lights
Prefer no street lights in countryside. Would live in town if wanted street lights. Tewin feels magical for not having street lights
prefer to have none
Restricted lighting needed in places
Rural villages do not need lighting
satisfied
see q15 Also, lack of lights encourages petty crime
Should be more by Plume and Feathers
Some lighting on Lower Green
Some low lighting on Lower Green needed
Something in keeping with the village
street lamps required opposite green.
Street lighting badly needed
street lights upper grn rd
Tewin is a village not a town and does not require street lighting
the odd light in tewin wood is
there are areas within the parish which are dangerous to pedestrians as they are forced to walk on the road
there is hardly any in Tewin Wood - only from private houses, see under No.17
There is no lighting. We don't need much just in certain places
there is no street lighting in Tewin Wood
There is non in Orchard Rd
There isnt any lighting
Too dark in grass warren!
Too many bright lights on gates etc which are unnecessary
Too much lighting
Too much lighting indicates suburbia and not a village
Too soon to comment.
Total street lighting not wanted
use torch in evenings
Very dark around Lower Green - dangerous!!
very dark on rout(?) and village hall
very dark walking over U. Green
villages do not require lighting
We are in a rural area we do not need more lights
we don't want more street lights
We need more lighting in village
Why not erect old style lantern lamppost
winter months no going out after 4pm
Wonderful to have NO streetlights
would be nice to have more
would like more in village
would prefer all street lights removed
would prefer no lights in Godfries

### Pedestrian walkways Comments

Access to upper green via road
Adequate for a village
Back Lane needs to be improved
bad with no lighting
could be improved so can walk safely up and down village
could re-route footpath opp. church cottages to edge of field
dangerous along road to tennis courts and tewin wood
difficult to walk safely with pushchair above Godfries close
Difficult to walk to PoF
do not want pavements in lane
Extremely poor
footpath to upper green
from lower green to upper green
From Tewin village to Tewin Wood very dangerous to walk
From the first houses right through village and around V hall
generally good
Godfries close - plume/upper green no path godfries close - harwood close too narrow
I would like to walk to school with my children - but the absence of a path at lower green - impossible
imperative for safety especially in the dark - thinking especially towards the plume
improved to allow walking or cycling to Tewin school from Tewin Wood
In view of the new playground on Upper Green, it should be possible to walk on a path from Lower Green all the way
In walking from Upper Green to the village it is not until you get to Godfries that there is a proper footpath
It is impossible to walk to Tewin from the wood with a pram. Very isolating.
Link to plume from pavement - corner esp
More and more people walking up toward Tewin Wood - dangerous walk with commuter traffic
More needed especially to upper green play area. Many need repairing.
Need footpath from Godfries close up to Plume of Feathers! very dangerous to walk on!
need footpath to the plume from godfries close
need more
need more pavement through whole village
Need ownership for keeping tidy
need pathway from village to tennis club / upper green
Need safer access to tennis courts and recreation area. Not muddy paths.
Need verges to step on to avoid traffic
need walkway between godfries close and upper green
needed badly required in tewin wood. Garden area taken to the road
Needed Godfries to Upper Green
No footpaths on Orchard Rd
No opinions
No path to Upper Green & the new playground
no pavements on the road towards upper green
no walkway between upper green and village and burnham green
No walkway from Godfries Close to Upper Green
No walkway from Godfries to Plume
Non-existent on part of Upper Green Rd
not enough space
not many of them
not safe for children and adults to walk up to plume and feathers and playground site needs footpath
not very safe

often too narrow or overgrown with shrubbery
orchard rd
Orchard rd needs footpath
Pedestrian walkway required between Upper and Lower Green
Pedestrians would be much safer if walkways were extended to upper green
poor around lower green
poor visibility at bends
provision for walkers from Burnham Gn to Upper Green
require better upkeep
satisfied
see Q22 below
Should be extended to Upper Green
Some need weeding
The main road to Upper Green can be dangerous
There are one or two places where there could be improvement
There should be one to the upper green
this is a village not a garden suburb
Too soon to comment.
Traffic on upper green road travels too fast and a footway would be safer
Unsafe access to Upper Green along road
up to playing fields
Upper Green Rd and Orchard Rd are dangerous
very important if children are to be encouraged to walk to school
very important to improve access for families around village without overdeveloping
Very poor. Never cleaned or swept
Walking to upper green, especially with playground
Want better footpath up to Upper Green please
We need an extension to the one that ends at Godfries Close right up to the cricket pitch
What we have is suitable for a village
wider footpath next to main road would be safer
Would like a pathway up to cricket pitch
would like footpaths on all roads with restricted speeds for cars
would like more footpaths
would like pathway to plume
would not like to see 'pavements' as it would alter the character of the village
You are unable to walk around the village with a pram without walking in the road

### Verges comments

always covered with dog poo
as above
becoming badly eroded
being eroded by parked cars
Better kerbs would help
better maintenance
Cars parked on them
churned up by too many cars
Continually being encroached on by large heavy lorries
Corner of Lower Green outside M. Hall
could be improved so can walk safely up and down village
could be tidier
Daffodils very nice
Damaged by 4x4s
Damaged by idiots
damaged by vehicles
Drainage could be improved
enforcement against people parking damaging them especially o/s 'the hazels'
Eroded by lorries and heavy transport
Frequently damaged by lorries
Heavy traffic destroying
Heavy traffic is destroying the grass verges, protection should be posts not kerbstones
kerb stones are dreadful
Link to plume from pavement - corner esp
n/a
need better paving linking upper green and lower green
need clearing
Need more care and attention
orchard rd - death trap
problems with potholes
prohibit parking on verges
regular parking on verges
require better upkeep
Road to be resurfaced
satisfied
see 'street cleaning'
Some damage from traffic
some ignored by local authority
some need to be 'trimmed' back
the verges with their wild flowers are being destroyed by lorries and 4x4s
These are getting eroded by heavy vehicles
too many people parking/driving on them
Too soon to comment.
when raining a lot of mud, branches and stones cover the road
worn away by cars in some places

### Footpaths comments

above rerouted would be safer for road pedestrians
Again people let their dogs poo and dont pick it up
All need upgrading
as above
as above or to the sports facilities on upper green, must be kept free of nettles etc
better maintenance
Better signs/upkeep
But dog owners need to be responsible
cars dominate the village
ditto for walkways
Extremely poor especially walking from the wood to the village.
footpath outside bungalows in Grass Warren and top end of Cannons Meadow very uneven
footpaths excellent
generally OK
intermittent
keep them maintained to ? good standard
lack of
messy
more needed
More required
Move the village shop / P.O.
need more footpaths through whole village
Needed up to tennis club
poor
see above
Separate bridleways and footpaths to enable walking
The path behind the houses leading to tennis courts gets overgrown
There is an abundance of good varied paths
Too soon to comment.
toomany unlicensed motorbikes on them VERY concerned about Dawley Wood
very dangerous walking from Upper Green to L/Green
Very fenced and often slippery (Dr Jury's field)
very uneven where existing
very well looked after
We are unaware of the positions of these facilities, as we rarely walk through the village.
Well maintained
Well maintained around Village
Winter - churned up muddy:

### Street cleaning comments

adequate
could be better
does it happen?
if you mean rubbish then yes, but have never seen a street cleaner!
Insufficient - hardly ever
Lanes need sweeping especially when hedges cut
Litter dropped from cars etc
more litter blitzes - get more residents involved
more needed
mucky verges presumably because cars have to park there and therefore cannot be cleaned
Mud slides etc
need more tidy up working groups
Needs to be regular so cars are removed
never seen it
No evidence of road sweepers
None in close as far as aware
not consistently kept clean
not enough
Not necessary here.
OK
Once a year
Poor cleaning leads to blocked drains
regular works done
stones on Tewin Hill are dangerous
takes place too early - when cars are parked
There is a lot of dropped litter in the village
there is no street cleaning in Tewin Wood
too infrequent - too many weeds
Too soon to comment.
upper green and orchard road
weeds

### Road Maintenance comments

	Frequency
A lot of damaged / holes in roads especially B1000 in Digswell area	1
Almost never	1
Appalling! main road needs upgrade	1
archers green - poor surface	1
Atrocious road maintenance	1
Back Lane could do with some attention	1
Bad	1
badly maintained	1
better repairs to churchfield rd and road between Tewin and Archers Grd(?)	1
Big pot holes all road to burnham green should be resurfaced	1
But please avoid making too tidy	1
cannons meadow sign needs replacing	1
conditions vary - reported pot hole usually dealt with promptly	1
Constant Flooding	1
dreadful, never repaired	1
efforts appear to be made but I guess it is all down to money	1
except in Tewin Wood	1
extremely poor surface	1
Fairly good	1
Flooding when heavy rain	1
Gutter cleaning needed	1
Hertford Road very bad	1
Holes etc need attention	1
Holes out by dairy farm	1
I live on Archers Green Lane. Its filthy, covered in mud, flooded for 6 months of the year, potholes currently 7 inches deep.	1
Is there any, floods here all the time	1
It is unacceptable that the drainage problems in school lane and churchfield rd are taking so long to resolve. We should not have to pay for the incompetence of the highway authority	1
lanes poor condition	1
Los of potholes around	1
Lots of £ spent but not	1
lots of pot holes	1
Lots of potholes	1
many potholes in roads	1
Markings on roads poor	1
more regular repairs after frost damage	1
Narrow roads - pot holes need filling by verges asap	1
Need an upgrade	1
need gritting service during snowy weather, present system does not work	1
need resurfacing and traffic management	1
non-existent	1
Not good enough	1
often floods both entrances to ?	1
often poorly maintained	1
OK in parts only	1
only botched up mostly	1
only gets done when really bad	1

Particularly a problem as a cyclist - road maintenance is important in encouraging cycling.	1
perrenial puddles in church rd/school lane	1
poor	1
Poor	1
Poor in places	1
poor to non existent	1
pot holes	19
Potholes a danger to cycling	1
potholes already very dangerous	1
potholes and surface needs attention	1
Potholes in Tewin Hill, Queen Hoo Lane	1
Potholes need frequent repair	1
potholes never repaired quickly enough if at all!	1
problems with flooding	1
Q. Hoo, Tewin Hill are commuter routes and need more maintenance than a reg. B road	1
Road edges need to be cleared of mud etc.	1
Road in close is in a bad state	1
Road surface poor on Orchard Rd	1
road surfaces in need of repair throughout village	1
road thru upper green and tewin wd	1
roads are appalling	1
Roads not gritted during winter	1
Roads very poor	1
Rough road surfaces discourage cycling	1
see questionnaire - illegible	1
Shocking in some places	1
Slow to respond and very poor quality of repairs	1
Some potholes	1
surrounding roads are poor	1
terrible condition	3
there is no road maintenance in Tewin Wood	1
Too many serious potholes - danger for cyclists horses/cows and pedestrians	1
too much surface water	1
Too soon to comment.	1
Very bad Archers Green	1
very bad pot holes etc	1
Very poor maintenance	1
Very poor patchwork particularly upper/lower green - car damaged	1
Very poor surfaces / numerous potholes	1
very very poor	1
White Horse Lane Very bad	1
work takes too long and is ineffective - flooding	1

### Road drainage comments

	Frequency
- but getting better	1
4 places prone to flood	1
access road to village often flooded	1
appalling	1
bad in places	1
Blocked drains and flooding still a problem	1
burnham green rd	1
but better since Branfield roadworks	1
church road	1
Constant flooding	20
Constant flooding in school lane	13
diagnosing problems enough	1
drainage onto roads from fields!	1
drainage opp church is poor	1
dreadful, never repaired	1
efforts appear to be made but I guess it is all down to money	1
entrance to ? Green Lane flooded regularly when heavy rain	1
Failure to cure problem	1
flood at school lane and churchfields	1
flood drains dont work	1
flooding areas should be addressed	1
flooding at churchfields	1
Flooding near church is dangerous!	1
Flooding near farm	1
Flooding often near church rd	1
flooding on burnham green rd	1
frequent drainage problems in various areas	1
Frequent maintenance of drainage ditches and removal of unnecessary curbs would help	1
gullies need cleaning out	1
improved but still problem areas	1
Is there any, floods here all the time	1
lacking attention. Major works required	1
lane always floods	1
large (?) water on road	1
large puddles gather at various places	1
lots of drains seem to be blocked	1
Lots of water on road surface	1
many large puddles	1
Margery Lane / Churchfield Rd	1
margery lane and school lane	1
more drains and keep clearing	1
Need an upgrade	1
need total overhaul	1
non-existent	1
Often flooded	1
Often flooded by Harmer Green Lane R'about	1
only gets done when really bad	1
Perrenial problem at bottom of Mangery Lane since kerbstones were installed	1

poor	2
Poor	1
poor drainage leads to erosion	1
problem in churchfield rd	1
problems with flooding	1
Rain water creates hazards on roads in village	1
Remove dam opposite Margery Lane	1
Repeated flooding in School Lane and by St. Peters Church	1
road floods just past church on regular basis	1
Roads flood frequently around village	1
see above	1
see questionnaire - not sure which it applies to	1
Several areas of improvement needed	1
Sewage leaks at Harmer Green / Hertford Rd	1
some drains need improving	1
some flooding still causing probs	1
some road liable to flooding	1
still problems in churchfields and school lane	1
Still unresolved	1
terrible condition	1
Terrible!!	1
The flooded roads issue is never resolved	1
this is being looked at	1
Too many floods to mention	1
too much surface water	1
Too soon to comment.	1
Totally inadequate	1
Try cleaning the gullies!	1
Usual problem in school lane	1
v. bad bottom marjory lane. Action needed	1
very bad - too much flooding, Archers green	3
Very poor, School lane and Churchfields	3
Very poor. Ditches not cleaned properly	1
was dreadful but recent work improved things	1
We are aware this problem is being addressed	1
we have our known problems	1
well known problem areas (2)	1
will they ever get it right?	1

### Road markings comments

	Frequency
Almost neon re-painted	1
better maintenance and regular painting	1
both areas need	1
could be better	2
Could be better re. parking	1
do not want sleeping policemen	1
Don't add any more -- too urban	1
don't get maintained	1
especially the entrance to the village off the B1000 cats eyes are needed. I've witnessed a few smashes and near misses in the dark	1
generally OK	1
Indistinct road edges	1
insufficient	1
more 'slow down' messages for traffic through the village	1
Need an upgrade	1
New traffic calming measures	1
non-existent	1
non existent	1
None?	1
Not repainted - very poor	1
our roads are lanes	1
Pinch points are dangerous	1
Road leading out of Tewin needs markings	1
Roundabout in Digswell is blind to oncoming traffic	1
Should be re-painted more regularly / frequently	1
sign on B1000 cannot be seen at night	1
speed control inadequate	1
street signing to cannons meadow needs repainting	1
Too many spoil village ambience	1
too much street furniture	1
Too soon to comment.	1
unnecessary markings and signs on burnham green rd between junction with bishops rd and bulls green	1
very poor, edge lining needed on main road	1
Virtually none existent at present	1

### Dog waste bins comments

	Frequency
(dog waste all over pavements in grass warren and cannons meadow)	1
Are there any?	12
Dog owners need to be trained!	1
dog owners treat village as a toilet	1
dogs mess outside home	1
Don't have a dog	1
don't want any as disposal should be owners responsibility	1
greant(?)	1
had none for a week after the snow	1
Have not seen any	4
I would like to see some on footpaths	1
improvement	1
More needed in whole area	13
n/a	6
nature is nature, but do not foul on walkway	1
Need bigger penalties for fouling	1
never seen any	1
No bins in cannons meadow	1
No dog.	1
no dogs but fields would be cleaner	1
none	2
none!! needed in grass warren	1
Not aware of any	7
not enough	2
Not evident	1
Not here	1
not many in Tewin Wood	1
people should take it home	1
provide some instead of the dogs fouling peoples gardens	1
Responsibility of dog walker (to take home)	1
some footpaths are badly fouled	1
there are none	1
There are none and there are loads of dog mess around the paths and grass around my house. There are also loads of children who play and or walk to school along these paths and walking in it. No-one seems to be bothered.	1
there are none in the village	2
There are none on grass warren	1
to my knowledge there are none	1
Too much dog waste on footpaths and pedestrian walkways	1
Too soon to comment.	1
very few	1
We don't see bins or dog mess now	1
we need some to put dog waste in	1
Where are there??	3
wish people would use them	1
Would be good to have some	1
would like to see one from grass warren to tewin stores	1

### Refuse collection comments

	Frequency
am impressed by their efficiency	1
At present	1
Collect plastic	1
Council lorries far too large for our roads and cause jams etc	1
Do not want FORTNIGHTLY collection!	1
Don't replace bin considerately	1
Excellent, friendly service	1
Getting less frequent/reliable	1
Good	5
Helpful binmen	1
it is very good and reliable	1
More recycling - we are ready	1
need collection 1x per week	1
need green bins	1
need recycle bins at tewin water	1
need them to take all refuse	1
No collection facility for garden waste	1
Not currently taking garden waste	1
ok	1
perfect	1
plastic bottles and garden refuse	1
reasonably good	1
recycle bins too small	1
Recycling facilities in the village	1
Reliable service	1
service ok but sometimes if have one extra black bin liner they wont take it	1
So long as maintained weekly	1
sorting procedure far from ideal	1
there are none	1
there is huge need	1
Too soon to comment.	1
unreliable and shoddy	1
very good service	3
we don't seem to have lots of recycling boxes	1
Weekly service only required in summer (smells) otherwise 2 weeks	1
would be good to have rigid plastics collected	1
would like brown bin collection for green use	1
would like some bin to put garden rubbish(?) in	1

### Trees and their maintenance comments

local authority refuses to do work on grounds of low budget
a lot of overhanging trees along the village roads could be better maintained
adequate
branches over hanging
Bushes tend to be left to obstruct road
dead trees and broken branches need tidying up
dead trees on churchfield rd
fairly good
garden recycling and tree preservation to be enforced
good
Good
hedging on orchard road requires trimming back
Hertford Road and Churchfield
high standard
I never see any tree maintenance
I think residents should be encouraged to to maintain their trees
Lack of maintenance makes Tewin shabby
lot of dangerous dead wood
Lots of old/brittle trees not managed on highway
Many trees caught up with overhead telephone and power cables
More care needs lavishing upon them
more planting needed. Many existing trees are ancient or affected with (?) fungies
need more maintenance to avoid storm damage
needs more care and attention
No support from council on maintenance only criticism and inappropriate contact. Dif officers - dif views.
Not enough trees
Not all households prune and maintain trees
not many trees (public) to maintain
ok
only gets done when really bad
Some room for improvements
storm damage needs tidying
Stu does a good job
The rigid and mindless application of the TPO is causing a deterioration in the quality of the environment in Tewin Wood
Too soon to comment.
Trees in the woodland behind our property in Lower Green continue to die
Worried about maturing trees on newer estates. Whose responsibility?

## Parking comments

(see verges)
90% of garages not used for parking cars on my road
adequate
although visitors often comment the area looks like a car park I fear the village has a lot of lazy parkers
An insolvable problem
Annoying around Lower Green
But not in Digswell
Dangerous around school
Dangerous in some places
Dangerous round Lower Gn Nth side
Difficult around Lower Green
Difficult round Lower Green
do not like parking on grass verges
Encourage households to use driveways/garages
entrance area to godfries close poses a danger and needs managing
Ghastly!
Godfries entrance is disgraceful - cars block view and access into close - needs policing!
I walk to school but think other parents struggle to park and it becomes very busy
inadequate space now by house
Inconsiderate parking on pavements
Informal roadside parking slows the traffic to a more acceptable speed
insufficient for village school and would be good to have partial off road parking outside house
Insufficient on bungalow area of grass warren
Its a shame when cars are parked on the verge at upper green at cricket matches
More off street parking in Residential
More off street parking required around Lower Green
more spaces at grass warren Bungalows needed
n/a
need off-road parking in my road
needs firm council control round v. g. in lower green
nightmare in Cannons Meadow at school times
no facility at Tewin Post Office
no parking on school lane
none outside the shop or in school lane
not much available eg at Tebutts
Not much facility
Not really an issue - bit crowded at times near shop
Not sure
Off-street parking needed
ok
Our close is a problem - but that is down to households
parking around school should be moved ie to pub car park for safety reasons ? staff and end of school day
Parking by Tewin village shop is sometimes problematic
parking in cannons meadow at school times is a nightmare
parking needs ? at Tewin stores
Parking on Lower Green near school very congested
Parking on verges should be prevented
particularly at school times
people don't use their garages enough

public parking virtually non-existent
Quite hard to park in memorial hall car park
school causes chaos...- ban parking by school / parents in Cannons Meadow!
see questionnaire
Should not be necessary to park on pavements
Surrounding Lower Green
Tebbutts car park is small and potentially dangerous
too many cars on the roads in Harwood CI (?)
Too many cars on verges!!
too many cars parked on roads (limiting vision and access)
too many cars parked on the street
Too many mothers parking in hazardous places on school run - Harmer Green Lane in particular
Too many on road overnight
Too much on road parking
Too much parking around the edge of lower green and a playground on upper green will cause problems when cricket and tennis matches are being played
Too much roadside parking around village green
Too soon to comment.
Vehicles should be allowed to park in bowls club car park for village affairs
Very bad
very haphazard
visitors and residents park across my car so I can't go our until I have found out where they have gone to and asked them to move their car first
Yellow lines particularly on blind corners

## **Question 21**

Are any of the following of concern to your household?

**Table of concerns**

	None	Some	Very
Traffic speed now	63	179	147
Traffic speed Future	15	97	142
Amount of traffic now	125	162	76
Amount of traffic future	23	96	137
Heavy vehicles now	120	177	70
Heavy vehicles future	39	103	92
Noise pollution now	183	116	46
Noise pollution future	55	100	67
Light pollution now	226	81	30
Light pollution future	78	83	50
Commercial aircraft now	170	142	37
Commercial aircraft future	38	109	93
Light aircraft now	102	149	117
Light aircraft future	33	107	104
Crime and vandalism now	125	192	38
Crime and vandalism future	26	153	60
Pests now	161	106	99
Pests future	81	70	75

## Question 22

Are there any other points you wish to make

### Final comments

1. I see signs of a "lobby" who would be happy for Tewin and Tewin Wood to be joined into another very large village, thus destroying the peaceful nature of the village. 2. I see no mention of the green belt - the largest most valuable asset the village has - this is a catastrophic omission - and invites planners to assume it is not important - this omission must be addressed before any further steps are taken with this "plan."
1. The appearance of the village would be improved considerably with putting telephone cables underground. 2. A parish ban of use of power tools on Sundays would be a great improvement. 3. The stealthy conversion of Tewinbury farm into a commercial sprawl should be stopped now! 4. Ban bonfires or at least restrict them.
388 bus to Hertford - why has the route changed again I am on the bus daily we pick up school children and that is it
A park is a wonderful addition to a beautiful village
Annual over 60s nosh-up should be for underprivileged and exclude fatcats!
anonymity/confidentiality has its dangers. Always have a checking system so that you may display that no abuse has taken place.
Any increase in the population of Tewin resulting from increased housing, serves to destroy the unique rural character of the existing village. An urban sprawl will result with increased road signage, excess street lighting and parking problems. (witness the result of additional building near Welwyn North Station, which has resulted in traffic congestion to a dangerous degree in New Road, where commuter parking restricts parking traffic flow to a single lane). Please guard against urbanisation at all costs!!
Apologies. Remarks made overleaf should have been made in this space. I think comment is more important that ticks in boxes but, of course, it then needs and unprejudiced assessment of the comment. We are more contemporary and up to date than our ages may suggest!
As father of 4 yr old son, welcome children's playground. Problem is that it is away from village on cricket pitch. I feel that it will be unused because of the dangerous walk between the green and Tewin Hill.
Don't like the proposed position of new playground especially as the bowls club has denied use of their land as agreed when they moved to the village - Have the parish council leaned on them enough? Is there a legal way to make them honour their commitment
Dumping of rubbish in secluded spaces and what can be done to help prevent fly tippers
fly tipping is an emerging problem
Have read planning proposal for a childrens playground on upper green and would support such a scheme. We think it's very important for the village's young to have things / activities to do.
hazardous parking along new road especially at Tewin school drop off and pick up times, in particular the entrance to tewin water. Panshangar aircraft continue to be excessively noisy and disruptive. In particular helicopter traffic should be banned. Times need to be restricted
How do we encourage young family groups 30-50 years to take a greater part in Village clubs and societies particularly for youth!!
I really hope that before the building of the playground goes ahead, the villagers will be able to vote on it
I would welcome the availability of cable - for broadband, phone and TV
In case you missed it - 1. fly-tipping everywhere 2. unacceptable and (?) noise from Panshangar air-field - especially over the week-ends.
Integration between church, village and school is better but this trend needs to continue to enrich the community life.
It is essential to retain the two post offices facilities. More visible policing is required
It may sound selfish but we think Tewin is an 'oasis' in the country side and we like it just how it is any development or growth would detract from the 'special' status we believe Tewin has - it is a unique place to live
It would be interesting to make a study to look at 'carbon footprint' of Tewin as a commuter area, and within the local context, and assess improvements eg cycling to school with the children on my non-working day. Sustainable energy sources? Waste management?
lack of skip site - or sites that once enabled residents to make short journeys for disposal of waste that exceeds wheely bin capacity
Lots of attention of DC on planning / house alterations. Not customer friendly. However completely missed sale of agricultural land in 'plots' suggesting long term agenda of a developer.

More involvement in the village as a community. More going on to bring people together, farmers market for regular fresh meat and produce. Recycling to include plastic
Not really directed for single working people of middle to retiring age
Please avoid urbanising this rural area e.g. by speed controls, yellow lines, lights etc. Our usage of local amenities is likely to change (i.e. increase) on retirement from full-time employment
Question 14 - We frequently use the Post Office at Burnham Green (Tebbutts) If this were not available we would use the PO at Tewin Stores. It is important that these facilities remain. Question 20 - I am very concerned about commuter parking in New Road Digswell (nr. Welwyn N station) but note that this is not in the parish of Tewin
Regular online information / a Tewin website would be very welcome. Tucked away in the wood does not feel as much part of the community as living in the village. Information about activities, events, fetes etc. could be posted here. An online noticeboard too!
see q 271 for comments
see Q129
see Q177
see Q283 for comments
see q305
see q318
see questionnaire
see questionnaire for attached sheet
see questionnaire no. 127
Serious consideration should be given to the bus service routing and timetabling
Tewin is a lovely village and on the whole reflects the rural ideal. There will always be issues - but nothing too major - I hope!
Tewin is a very pleasant place to live. Long may it remain so.
Thank you for organising survey. Moved to Tewin from London 24 years ago. Like Tewin the way it is. Gradual changes such as Tewinbury Farm and Bowls Club are an asset to village.
The management in TW
The roads and pavements need particular attention. Some more unobtrusive street lights might be of help to some areas. The Parish Council needs to be more democratic. eg seeking funds etc for play area without consulting village first. An open meeting would have given people a chance to express their views. This was done previously and much appreciated.
The village life of Tewin would be affected by more housing. I oppose such development and would encourage a group 'class' action (as in the USA), to oppose such legislation. Educational walk, group bike rides and family picnic days would add to village life. 'Concert on the green with fireworks would be a good event. Richard.
There has been no mention of the beautiful River Mimran or its lovely glacial valley. The whole length should be protected, water should not be extracted, as it has decreased greatly over the years. The fields, hedges and trees should be cared for as it has been as pleasant pasture land by the farmer. This must continue. The B1000 is a complete racetrack and has caused deaths. It needs stopping. All these things should be of great concern for the Parish Council as this is what makes Tewin such a wonderful desirable place.
Too much house security lighting. Adversely affects wild life (especially owls etc) and wastes energy therefore contributing to Global warming. Too much property entrance lights especially on Orchard Road constituting a hazard to motorists.
Traffic should be slowed down especially as there is no footpath from Godfries close to the Plume/ or one up to Tewin Wood. Very dangerous to walk on especially at night. Traffic drives at 40mph+ in a 30mph zone!
Water resources are inadequate for the future. Rivers and Aquifers are already over abstracted. Climate change will exacerbate the present situation. Additional housing will further tax resources. No plans to store water seem to be considered - No provision of reservoirs in Herts. No other plans for water conservation identified.
We're looking forward to the new playground
We are relatively poorly served in terms of the quality of broadband access in the village proper since the cabling from Welwyn village extends to the limit of effectiveness. Is this an area the parish council could coordinate and upgraded service for minimal costs.
We feel that the proposal to remove part of the village from the 'Green Belt' needs to be reflected in the village plan. The character of the village will be destroyed if the 'green open spaces' are taken away. Due to working full-time we have been unable to make full use of all the facilities and activities on offer in Tewin but intend to make full use of these when time permits.

we have only been in Tewin for a relatively short time so are not familiar with some of the questions therefore the response is minimal to this plan

We really like living in Tewin and the bridle paths have been much improved over the last 12 months. Beauty salon at Tewin Hill Farm could have been mentioned as this is a welcome treat

We use post office at Tewin stores also prescription service, we very much appreciate the above services.

Would be great if bus was available to take elderly & non-drivers to doctor's surgery

Yes I am more concerned about protecting our village and maintaining the rural charm, for our children to enjoy, as we have, in the past. More lighting and more houses will detract from this. Its clear to all that we cannot continue to expand and retain a village status.

Your questionnaire is very thorough! Seem to have covered everything. Sorry we could not answer more but we seldom come into the village as we live in Tewin Water.